



25-  
26

**CAPABILITY STATEMENT**





<b>Company</b>	Nu-Tank LP.
<b>ABN</b>	39 402 880 856
<b>Business</b>	Manufacturer of polyethylene tanks, feeders and troughs. Retailing water tanks, molasses and dunder tanks, diesel storage tanks, transport, industrial tanks, firefighter units, wet and dry lick feeders, water and molasses troughs, pumps and accessories, septic and grey water tanks, round steel tanks and self bunded tanks.
<b>Year Established</b>	2008
<b>Office &amp; Factory</b>	873-881 Yaamba Rd, Parkhurst Q 4702
<b>Phone</b>	1300 36 11 10
<b>Fax</b>	07 4936 4211
<b>Postal Address</b>	PO Box 5462 Red Hill, North Rockhampton Q 4701
<b>Website</b>	<a href="http://www.nutank.com.au">www.nutank.com.au</a>
<b>Email</b>	<a href="mailto:sales@nutank.com.au">sales@nutank.com.au</a>

Nu-Tank operations are located on Darumbal land and Nu-Tank respectfully acknowledges the traditional owners and custodians of this land.



## About Us

In 2008 the nu-kid (in his 20's, though a second generation tank manufacturer) was to turn the liquid storage tank manufacturing process on its head. Stephen Trail leased a shed in Parkhurst, on the northern outskirts of Rockhampton, and a steadily growing team (now 35 strong) started designing and making tanks a little bit differently, appropriately under the name Nu-Tank.

The polyethylene liquid storage revolution had begun with the belief there had to be a better way to make tanks that last. Computer controlled ovens, not open flames, would do the cooking. Only proven raw materials would be used. Roofs stayed on, as one with the tank and made strong, not needing internal support poles. And the bane of many tank buyers was to be eliminated, no fitting split. Splits caused by ill-fitting outlets, normally brass, eliminated by poly fusing then welding a poly outlet to the inner and outer walls of the larger tanks.

Nu-Tank purposely set out to make better tanks. Clean, Strong, Reliable tanks. And continuous improvement would be the underlying catch-cry.

A rural landscape under a clear blue sky. In the foreground, a large, weathered log lies horizontally across the frame. In the middle ground, two large, cylindrical, corrugated metal water tanks sit on a slight rise. To the right, a tall metal windmill stands on a tower. The ground is dry and dusty with sparse, small trees. A black tarp is visible in the bottom foreground.

let's quickly address  
the misperception...

all polyethylene tanks  
are

**NOT  
THE SAME**

## Why Nu-Tank?

### 1. Aussie Made

Nu-Tank make their tanks, troughs and feeders in their factory located in regional Queensland. Using food grade materials, BPA and heavy metal free. UV stabilised, Nu-Tank's products are made for Australia's unique conditions.

### 2. Ribbed side walls

To ensure the integrity of the tank is sustained Nu-Tank design their tank walls to have ribs. Imagine if you didn't have ribs protecting your vital organs. Ribs in a tank wall offer similar support, where it is needed most.

### 3. Poly fused & welded outlets

The irony of making a perfect tank is that in order to add a fitting you have to then put a hole in it. This can spell disaster for your tank, especially at the base of the tank where the greatest pressure will be exerted when full. A 10,200 gallon water tank can hold up to 46 tonnes of pressure. To keep the tank strong Nu-Tank poly fuse and weld the outlet through the entire thickness of the tank wall. No brass fittings = no fitting split. The result a stronger, more reliable tank holding your most precious asset.

### 4. Fully self-supporting roof

Some tank manufacturers in an effort to save costs give the roof of their tanks a low pitch and use support structure (a pole) inside the tank to hold the roof up. While it is true there is little pressure on the roof (above the overflow) something as simple as tree branch falling on the roof can cause it to sag and dislodge the inside pole. Which can result in the roof breaking. And being a low pitch roof bird droppings on the roof mixed with rain water can then seep through the crack along with any vermin using the dislodged pole to access and contaminate the stored water. What effect could this have on your livestock or yourselves?

All polyethylene tanks are not the same. Nu-Tank's self supporting roof doesn't use internal support structure, it is what Nu-Tank puts into their walls that makes them superiorly different;

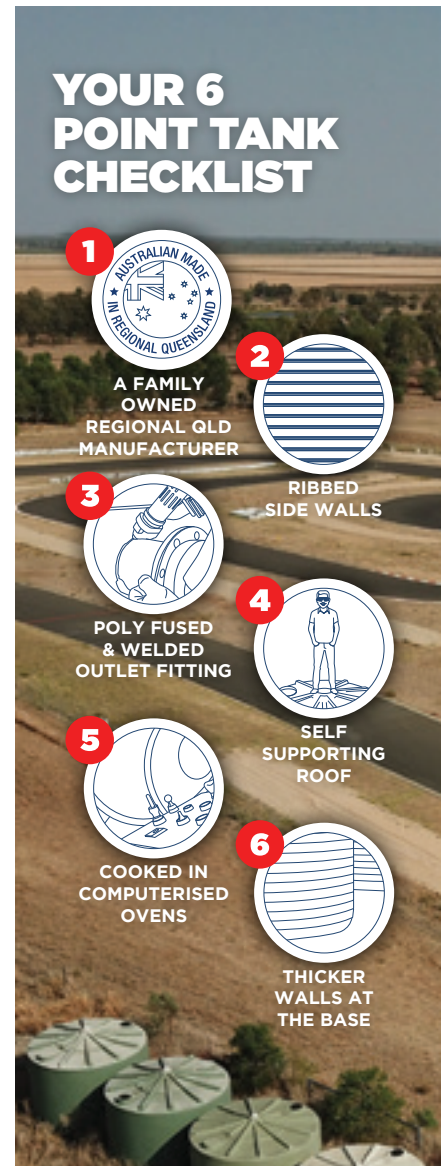
A cleaner, stronger and more reliable product every time.

### 5. Made in computer controlled ovens

Quality technology isn't something that all tank manufacturers have in common. At time of writing, Nu-Tank are one of 3 tank manufacturers Australia wide and the only tank manufacturer in Queensland that has the capacity to make a 10,200 gallon tank in a computerised oven. If you're not buying Nu-Tank, you' could be buying tanks made over open flames and just like camp cooking it is hard to maintain consistency over an open fire. Do you really want a tank over and/or undercooked?

### 6. Thicker walls where it counts

As previously mentioned, there is a lot of pressure built up inside a tank, attacking any weak spots. Nu-Tank not only add more material during their manufacturing process, they control their computerised ovens to ensure the tank is made thicker towards the base of the tank. Giving you thicker walls where it counts and a heavy duty construction that will stand the test of time.



# Round Tanks




**STRONGER AGAIN**  
 INDUSTRIAL TANKS - to spec

- Thickness can be increased for higher SG Rating
- Certified lifting lugs
- Welded plates on side of tanks

SIZE	MEASUREMENTS
10,200gal (45,995L)	D: 4,520 IH: 3,100 OH: 3,440 (MM)
6,200gal (28,000L)	D: 3,785 IH: 2,660 OH: 3,040 (MM)
5,500gal (25,000L)	D: 3,660 IH: 2,285 OH: 2,630 (MM)
5,000gal (22,700L)	D: 3,535 IH: 2,265 OH: 2,810 (MM)
4,400gal (20,000L)	D: 3,520 IH: 2,110 OH: 2,610 (MM)
3,300gal (15,000L)	D: 3,170 IH: 2,075 OH: 2,320 (MM)
2,200gal (10,000L)	D: 2,490 IH: 2,245 OH: 2,400 (MM)
2,200gal (10,000L)	D: 3,170 IH: 1,450 OH: 1,690 (MM)
1,750gal (8,000L)	D: 2,490 IH: 1,790 OH: 2,000 (MM)
1,100gal (5,000L)	D: 1,800 IH: 2,130 OH: 2,230 (MM)
1,100gal (5,000L)	D: 2,500 IH: 1,175 OH: 1,410 (MM)
1,100gal (5000L)	D: 2,120 IH: 1,525 OH: 1,730 (MM)
750gal (3,500L)	D: 1,650 IH: 1,680 OH: 1,845 (MM)
660gal (3,000L)	D: 1,400 IH: 2,095 OH: 2,175 (MM)
550gal (2,500L)	D: 1,830 IH: 1,000 OH: 1,200 (MM)
450gal (2,000L)	D: 1,170 IH: 1,820 OH: 1,920 (MM)
330gal (1,500L)	D: 1,300 IH: 1,350 OH: 1,350 (MM)
260gal (1,200L)	D: 1,170 IH: 1,235 OH: 1,270 (MM)
130gal (600L)	D: 815 IH: 1,265 OH: 1,265 (MM)
125gal (570L)	D: 875 IH: 1,000 OH: 1,000 (MM)

WATER	MOLASSES	DUNGER	INDUSTRIAL	DIESEL	LIQUID FERTILISER
•	•	•	•	•	•
•	•	•	•	•	•
•	•	•	•	•	•
•	•	•	•	•	•
•	•	•	•	•	•
•	•	•	•	•	•
•	•	•	•	•	•
•	•	•	•	•	•
•	•	•	•	•	•
•	•	•	•	•	•
•	•	•	•	•	•
•	•	•	•	•	•
•	•	•	•	•	•
•	•	•	•	•	•
•	•	•	•	•	•
•	•	•	•	•	•
•	•	•	•	•	•
•	•	•	•	•	•
•	•	•	•	•	•
•	•	•	•	•	•
•	•	•	•	•	•
•	•	•	•	•	•
•	•	•	•	•	•
•	•	•	•	•	•
•	•	•	•	•	•
•	•	•	•	•	•
•	•	•	•	•	•
•	•	•	•	•	•
•	•	•	•	•	•
•	•	•	•	•	•
•	•	•	•	•	•
•	•	•	•	•	•
•	•	•	•	•	•
•	•	•	•	•	•
•	•	•	•	•	•
•	•	•	•	•	•
•	•	•	•	•	•
•	•	•	•	•	•

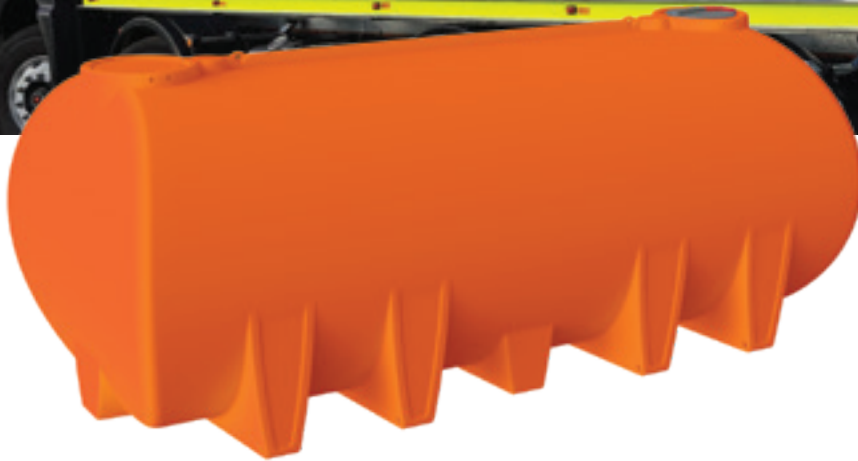
\*All dimensions may vary by + or - 3% due to the rotational moulding process. Measurements do no include frames where applicable.



**Nu-Tank have 3 computer controlled ovens onsite.**

**They are 1 of 3 manufacturers in all of Australia who can cook a 10,200gal tank in a computer controlled oven.**

# Transport Tanks



SIZE	MEASUREMENTS	WATER	CIVIL WATER (Slip On)	CIVIL WATER (Chassis Mount)	MOLASSES	DIESEL	DIESEL (Slip On)	DIESEL TRANSFER 12V	LIQUID FERTILISER
18,000L	L: 5,030 W: 2,380 H: 2,060 (MM)	•	•	•	•				•
15,000L	L: 4,020 W: 2,400 H: 2,100 (MM)	•	•	•	•				•
13,000L	L: 3,730 W: 2,270 H: 2,200 (MM)	•	•	•	•				•
13,000L	L: 3,970 W: 2,260 H: 1,930 (MM)	•	•	•	•				•
12,000L	L: 3,650 W: 2,100 H: 2,100 (MM)	•	•	•	•				•
11,000L	L: 3,650 W: 2,120 H: 2,015 (MM)	•	•	•	•				•
10,000L	L: 3,600 W: 2,100 H: 1,775 (MM)	•	•	•	•	•	•		•
8,000L	L: 3,340 W: 2,040 H: 1,670 (MM)	•	•	•	•	•	•		•
7,000L	L: 3,200 W: 1,900 H: 1,540 (MM)	•	•	•	•	•	•		•
6,000L	L: 2,790 W: 1,910 H: 1,570 (MM)	•	•	•	•	•	•	•	•
5,000L	L: 2,350 W: 1,820 H: 1,475 (MM)	•	•	•	•	•	•	•	•
4,000L	L: 2,400 W: 1,700 H: 1,400 (MM)	•	•	•	•	•	•	•	•
3,000L	L: 2,320 W: 1,530 H: 1,250 (MM)	•	•	•	•	•	•	•	•
2,400L	L: 2,275 W: 1,405 H: 1,065 (MM)	•	•	•	•	•	•	•	•
2,000L	L: 1,875 W: 1,420 H: 1,100 (MM)	•	•	•	•	•	•	•	•
1,500L	L: 1,720 W: 1,330 H: 980 (MM)	•	•	•	•	•	•	•	•
1,200L	L: 1,720 W: 1,330 H: 820 (MM)	•	•	•	•	•	•	•	•
1,000L	L: 1,450 W: 1,255 H: 870 (MM)	•	•	•	•	•	•	•	•
800L	L: 1,450 W: 1,255 H: 715 (MM)	•	•	•	•	•	•	•	•
600L	L: 1,205 W: 1,000 H: 750 (MM)	•	•	•	•	•	•	•	•
400L	L: 1,205 W: 1,000 H: 610 (MM)	•	•	•	•	•	•	•	•

\*All dimensions may vary by + or - 3% due to the rotational moulding process. Measurements do not include frames where applicable.



### Slimline Tanks



SIZE	MEASUREMENTS
5,000L	L: 2,800 W: 1,200 H: 1,900 (MM)
3,000L	L: 2,520 W: 810 H: 2,130 (MM)

WATER	INDUSTRIAL
•	•
•	•

### Septic & Grey Water Tanks

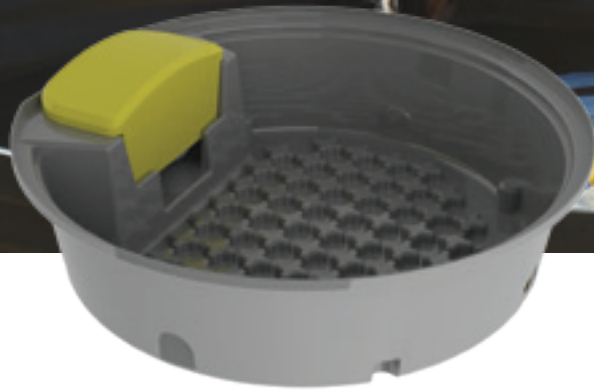


SIZE	MEASUREMENTS
4,000L	D: 1,998 H: 2,430 (MM)
3,200L	D: 1,998 H: 2,030 (MM)
1,200L	D: 1,100 H 1,855 (MM)
900L	D: 1,100 H 1,370 (MM)
700L	D: 1,100 H 1,060 (MM)

SEPTIC	GREY	INDUSTRIAL
•		•
•		•
	•	•
	•	•
	•	•

\*All dimensions may vary by + or - 3% due to the rotational moulding process. Measurements do not include frames where applicable.

## Livestock Watering - Round and Cross Over Troughs



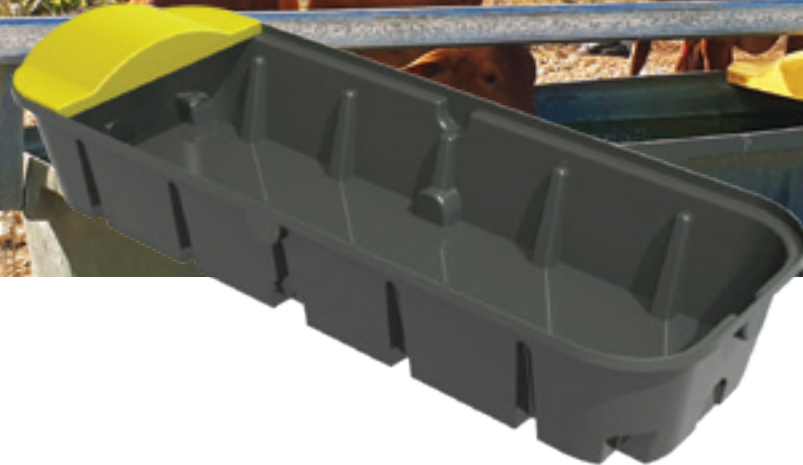
SIZE	MEASUREMENTS
2,000L	D: 2,320 H: 610 (MM)
1,200L ProTub	D: 1,850 H: 580 (MM)
1,000L Crossover	D: 1,934 H: 600 (MM)
600L ProTub	D: 1,435 H: 560 (MM)
220L ProTub	D: 1,150 H: 450 (MM)

SAFETY TREAD

FLAT FLOOR

•	•
	•
	•
	•
	•

## Livestock Watering - Long and Centreline Troughs



SIZE	MEASUREMENTS
750L	L: 2,350 W: 910 H: 592 (MM)
200L Centreline	L: 1,700 W: 600 H: 600 (MM)
400L Centreline	L: 2,500 W: 600 H: 470 (MM)

SAFETY TREAD

FLAT FLOOR

•	•
	•
	•

\*All dimensions may vary by + or - 3% due to the rotational moulding process. Measurements do not include frames where applicable.

## Wet Lick Feeders



SIZE

- 150L ROLLER DRUM
- 1,200L WHEEL LICKER
- 600L WHEEL LICKER

MEASUREMENTS

- W: 710 H: 340 L: 880 (MM)
- D: 2,060 H: 820 (MM)
- D: 1,560 H: 820 (MM)

## Dry Lick Feeders



SIZE

- 300L DRY FEEDER
- 650L DRY FEEDER

MEASUREMENTS

- RH: 1,430 TH: 601 OH: 1831 RW: 2,400 (MM)
- RH: 1,430 TH: 601 OH: 1831 RW: 2,400 (MM)

\*All dimensions may vary by + or - 3% due to the rotational moulding process. Measurements do not include frames where applicable.



Nu-Tank's patented  
Safety Tread Trough  
saves lives!

Preventing injuries,  
loss of stock and the  
subsequent spoiling  
of feed.

## Hay Feeders



SIZE  
 35L D FENCE FEEDER  
 FENCE HAY FEEDER WITHOUT LID

MEASUREMENTS  
 W: 400 H: 250 L: 420 (MM)  
 W: 600 H: 839 D:500 (MM)

## Molasses Troughs



SIZE	MEASUREMENTS
2,500L	D: 2,500 H: 500 (MM)
1,500L	D: 1,850 H: 700 (MM)
1,000L	D: 1,800 H: 500 (MM)
750L	D: 1,500 H: 530 (MM)
650L	D: 1,360 H: 530 (MM)
500L	D: 1,285 H: 500 (MM)
400L	D: 1,285 H: 380 (MM)
300L	D: 1,250 H: 300 (MM)
200L	D: 1,100 H: 300 (MM)
50L	D: 650 H: 300 (MM)

SAFETY TREAD	FLAT FLOOR
•	•
•	
•	
•	•
•	
	•
	•
	•
	•

\*All dimensions may vary by + or - 3% due to the rotational moulding process. Measurements do not include frames where applicable.

## On Farm Diesel Storage



SIZE	MEASUREMENTS
4,400gal (20,000L)	W: 2,500 H: 2,545 L: 6,100 (MM)
2,200gal (10,000L)	W: 2,500 H: 2,545 L: 3,050 (MM)
1,100gal (5,000L)	W: 1,850 H: 2,350 L: 2,500 (MM)

**Option of 240V or 12/24V**

Nu-Tank are able to supply **SELF BUNDED** tanks for Petrol, Diesel and AVGas.



## Fire Fighter Slip-On Units



SIZE	MEASUREMENTS
2,000L	L: 2,560 W: 1,490 H: 1,200 (MM)
1,500L	L: 1,995 W: 1,712 H: 1,120 (MM)
1,200L	L: 1,995 W: 1,715 H: 970 (MM)
1,000L	L: 1,905 W: 1,445 H: 1,030 (MM)
800L	L: 1,905 W: 1,445 H: 865 (MM)
600L	L: 1,680 W: 1,245 H: 885 (MM)
400L	L: 1,680 W: 1,245 H: 735 (MM)

\*All dimensions may vary by + or - 3% due to the rotational moulding process. Measurements do not include frames where applicable.





## CASE STUDY

### BRAVUS (PREVIOUSLY ADANI) 2020

280 fittings across 50 tanks. That was the original order. Tanks of various sizes and grades. Purposes ranged from storing potable and non-potable water as well as raw and treated sewerage.

The industrial customisation of the tanks included certified lifting lugs and tie down points.

In addition to the customisation of the tanks, they had to be delivered to a remote location by a specified date. A deadline that was met despite rain delays and road closures.

In filling the initial order, more sales orders followed, culminating in another 60 tanks being installed along a rail corridor. These tanks were used to supply water for general needs and for dust suppression.

On site customisations were also made including pigeon pairing tanks to enable a 'quick fill' of 70000 litre road train water carts.

Our client was extremely satisfied with our product, service and knowledge. Which has led to Nu-Tank being invited to quote for other mining related projects they are primary contractors for.





## Our Core Values

### Passion

We are passionate. Passionate about polyethylene and passionate about meeting our clients requirements. Unsure about your needs, that is no hassle, we know the ins and outs of our product lines. Whether you are a seasoned farmer or a suburbanite we have a product that is perfect for you. We truly believe every property should have a Nu-Tank.

### Honesty

Honest and fair, the way an Australian country lifestyle raises you to be. When your working hard on the land dealing with reliable companies is a must. Nu-Tank strives to be the company that you know is fair dinkum, before, during and after the sale.

### Respect

R E S P E C T ! Whether it is at your property or ours you will notice respect above all else. Nu-Tank reveres itself on treating our customers right. A happy and respected client is a repeat client. And even if you have no need to come back, cause our products really do last, we know you will return our respect and let others know what a great company we are.

### Quality

Quality of product and service is our calling card. You remember us, because our products stand true in your paddock delivering results everyday. If it's got to survive Australia, use products made in Australia from Australian materials. If it's built to last, it's a Nu-Tank.



### Viridescent

Viridescent, a word designed to grab attention. It means becoming green. At Nu-Tank we are viridescent. Our factory roof is completely covered in solar panels. Also leading the way to a greener future, our delivery vehicles operate using the world's most fuel efficient engines. All our hard & soft plastics, offcuts & and scrap are ground down onsite in our state of the art recycling plant and sent away to be used in the production of other products.

### Innovation

At some time in history someone thought "I wish I had a way to save this rainwater" and a tank was born. Nu-Tank pride themselves on their innovation constantly improving their product lines and coming up with new and improved products.



An aerial photograph of a dry, arid landscape. In the center, there is a circular pond surrounded by a low earthen wall. The ground is reddish-brown and sparsely covered with small trees and shrubs. In the distance, a flat horizon line is visible under a clear sky. Two large, cylindrical water tanks are visible on the right side of the image.

We can organise delivery  
**AUSTRALIA**  
**WIDE**...

and personally deliver  
within Queensland\*.



## Community

Written into our original business plan, in preparation for opening the business in 2008, was the premise to give back to the communities that support us. Corporate Social Responsibility is the marketing jargon, simple recognition that business is a 2-way street is how the Directors of the business view it.

Over the years Nu-Tank has supported, either financially or with product, a large number of Queensland organisations, events and initiatives, including:

- Alpha Golf Club
- Ballyneety Rodeo Club Inc
- Beef Capital Cares Bush Fire Appeal
- Blue Mountain Campdraft Committee
- Borghero Mini Buckers
- Brangus Youth Camp
- Callide Dawson Beef Carcase Competition
- Central Queensland Capra's
- Dingo State School
- Foundations Care
- Kalapa Hall Horse Sports Day
- Marlborough Campdraft
- Middlemount State School
- Mount Morgan Rodeo Association
- Northern Beef Producer Expo
- Richmond Field Days and Races
- Rockhampton Special School
- Rockhampton Tennis Association -  
Town & Country Carnival
- Westech Field Day, Barcaldine
- Whitsunday Australian Stock Horse -  
Society
- Wowan Hack and Pony Club Gymkhana



## Clients

Nu-Tank has over 3000 clients. Majority of which are involved in the agricultural industry. Our growing reputation in the quality and fit-out of our industrial tanks has led to Nu-Tank being awarded major mining contracts. Below are some of our major clients.

### Mining

Adani - Moray Carmichael Mine  
 Anglo American - Dawson Mine  
 BHP Billington - Peak Downs Mine  
 Glencore - Oaky Creek  
 Golding Contractors  
 Jellinbah Mining  
 Peabody Energy  
 Sibelco  
 SMW Group  
 Sojitz MDS Mining - Meteor Downs South  
 Stanmore Coal - Isaac Plains Mine  
 Thiess

### Agricultural

Ballard Industrial  
 Orica Australia  
 Simmons Cattle Co  
 Stanbroke  
 Viper Water Solutions

### Civil Construction

Cap Coast Sand and Soil  
 JRT Group

### Transport

Bells Transport  
 National Water Carts



## Safety and Training

Safety is paramount at Nu-Tank. Saying it is easy, creating an environment that is safe and healthy for its employees, contractors and visitors is another. Nu-Tank constantly reviews its Workplace Health and Safety Management Plan with the on-going aim to minimise risk, avoid harm. All employees are aware that they share a responsibility in this on-going review. Employees are encouraged to report any safety concerns, adhere to policies, procedures and directions. And to look after each other's safety, as well as their own.

Our induction procedure is not just questions to answer, nominated personnel accompany new employees, contractors and visitors for an inspection of the factory identifying the safety procedures put in place and explaining why they exist.

Nominated personnel also regularly attend Workplace Health and Safety seminars and workshops, keeping the business updated on policy changes and ideas on how a safer and healthier work environment can be enhanced.



## Environment

Nu-Tank commenced in our Parkhurst factory in 2008. Thus a quite modern operation we have been conscious of our environmental footprint since the beginning. No landfill waste during the manufacture and production process of any product was an early goal, which has now been achieved. In achieving this we invested in our own recycling plant which can convert 1200kg of plastic per hour into reusable plastic fragments. All waste materials and wrap from our water tanks are granulated and/or compressed on site and are returned to the original supplier for recycling into further product.

Our fleet of delivery trucks have been upgraded to more fuel efficient models making them the most environmentally friendly delivery vehicles around today. Our tank making machines are the most energy efficient in the world. All our products are made in computer controlled ovens, not over an open flame, like some tank manufacturers continue to do.

Our most obvious investment in reducing our environmental footprint has been the installation of solar panels on our factory roof. Able to generate up to 60kw, the 320 solar panels offset about a quarter of our electrical consumption. We have more to do and will keep looking at ways to be more sustainable. After all, a large part of our business is enabling you to capture and store a vital natural resource and keep it that way, clean, no added impurities, straight from the heavens - rain water. The cleaner we can make the whole process the better for everyone.





## Quality

The polyethylene tank industry is relatively new in water storage solutions. Concrete and steel used to be the main construction materials. As the market for polyethylene tanks started to grow, new manufacturers popped up believing there were cheaper ways to build the tanks and make more margin. Being a 2nd generation tank manufacturer, the Director of Nu-Tank knew what he didn't want to create when he started the business in 2008. Nu-Tank would be about quality, reliability.

If the customer does the right preparation for the installation of the tank, Nu-Tank provides a full 20 year warranty, not pro-rata.

Only quality raw materials would be sourced. Round tank walls would be made thicker towards the base where the most pressure is. To do this tanks would be made in computer controlled ovens, not cooked over an open flame, a practice that continues in the industry especially with larger tank sizes. All this required a greater initial, and on-going, investment in equipment and machinery, but Nu-Tank is committed to the long run. While a number of the pop-up operations have now since disappeared, Nu-Tank has grown, especially from support of an expanding dealer network who want to sell good tanks, tanks that they won't have their customers complaining to them about.



### Key Contacts



**Steven Franklin**  
Product Consultant

**1300 36 11 10**  
s.franklin@nutank.com.au



**Mark Titmus**  
Product Consultant

**1300 36 11 10**  
mark@nutank.com.au



**Warren Acutt**  
Business Development  
Manager

**1300 36 11 10**  
warren@nutank.com.au

Thinking of buying a tank; not sure what size, where you should put your fittings, what the pad should be made from, how close to the shed or house it should go, if you can or should connect one tank to another, what temperature bore water has to be under before pumping it into a tank, what size pump you need, how much do they cost?, Steve and Mark are your go-to people. They will help to ensure you get the tank that best suits your present and future needs.

Their knowledge of this industry is boundless when it comes to polyethylene water tanks industrial tanks, transport tanks, septic tanks, diesel tanks, molasses tanks, fertiliser storage solutions, fire fighter units; this dynamic duo will have the answer to your questions to answer your questions.

From a marketing and media background, Warren helps clients build their brand value by being associated with the Nu-Tank brand. From Dealers reselling Nu-Tank products in small rural towns, to major mining, civil construction and agricultural companies, Warren's role is to develop the Nu-Tank business by helping you to also develop your business. "The decision to purchase from an innovative Australian owned business, started from scratch by a lad from northern Queensland in his 20's, that only uses proven materials to manufacture their tanks is a great story to tell and to be a part of".



[www.nutank.com.au](http://www.nutank.com.au)