

## PRODUCT SHEET

VIEW THIS  
PRODUCT  
ONLINE



DIAMETER	1100MM
HEIGHT	1370MM

All dimensions may vary  $\pm$  3% due to rotational moulding process.

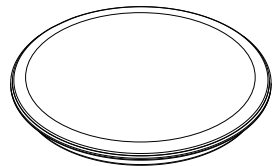
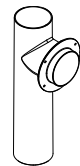
**PRODUCT CODE:  
PGW900**

## 900L SEPTIC / GREY WATER TANK

### FEATURES

- Foot trafficable when installed
- Designed for easy transportation and installation
- Manufactured from proven Australian standard materials (tested in the field for over 25 years)
- Heavy duty construction (designed for underground use)
- Supplied as complete kit (including inlet and outlet T-pieces)
- Wider foot at base (stops uplift)

### FREE INCLUSIONS

Childsafe Top Inspection Lid	T-piece Inlet and Outlet
	

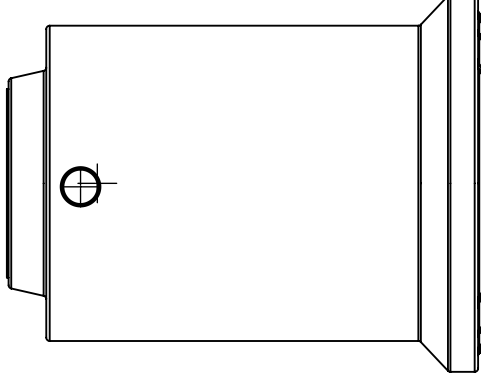
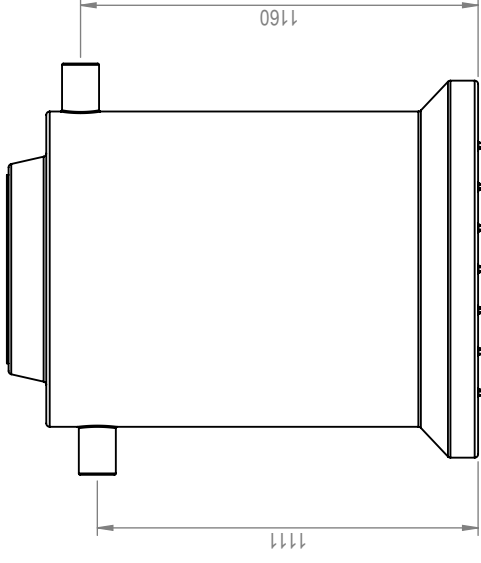
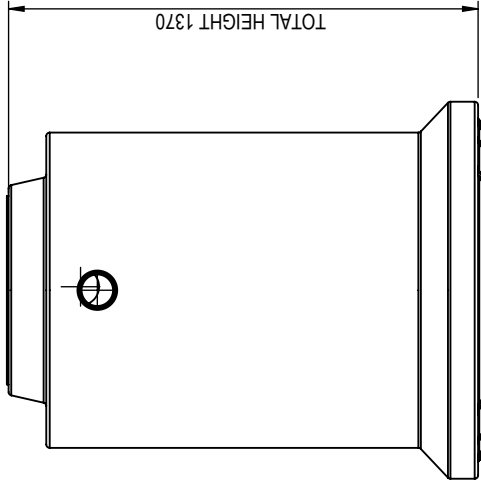
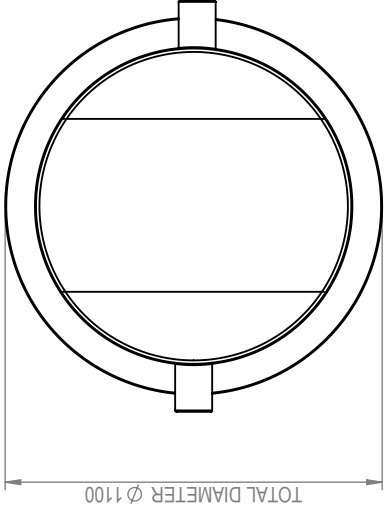
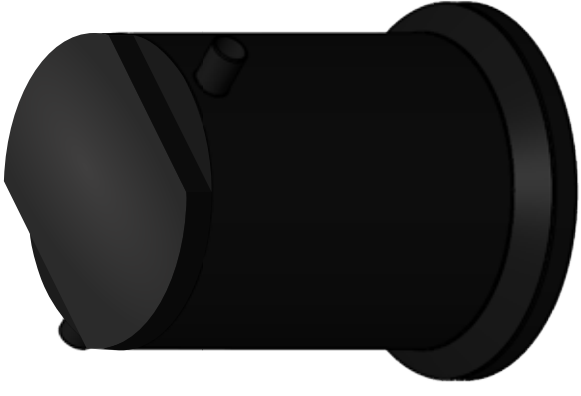
\*Inclusions may change without notice, check with sales prior to ordering

### COLOURS AVAILABLE



Black

NB: Colours may vary due to screen and printer calibrations.



### Details

Manufacturer's Name	Nu-Tank Pty Ltd
Tank Capacity	900 Litre
Specific Gravity	2.0
Maximum Design Service Temperature	23°C
Standard	AS/NZS 4766

All dimensions may vary ± 3% due to rotational moulding process.



PRODUCT CODE:

PCW900

DESCRIPTION

900 LITRE SEPTIC / GREY WATER TANK