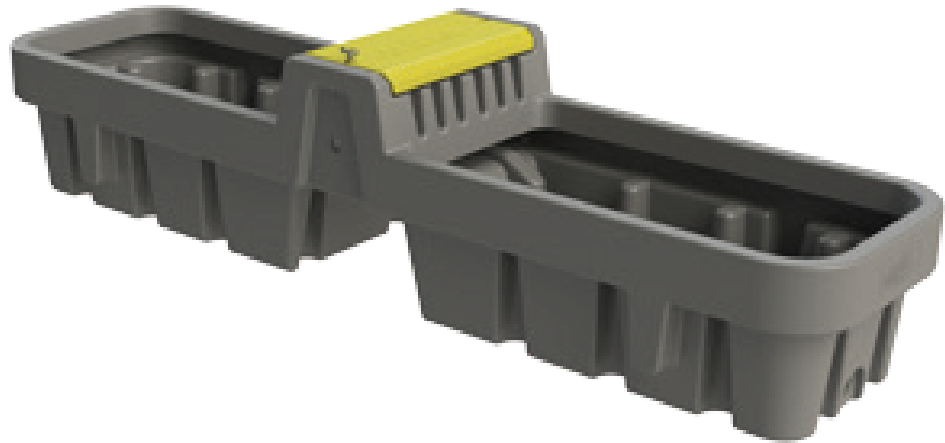


PRODUCT SHEET

VIEW THIS
PRODUCT
ONLINE



LENGTH	2400MM
WIDTH	600MM
HEIGHT	400MM
OVERALL HEIGHT	560MM

All dimensions may vary \pm 3% due to rotational moulding process.

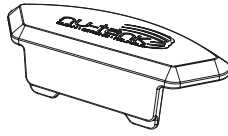
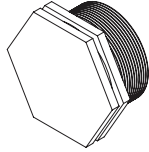
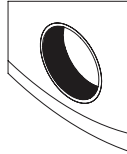
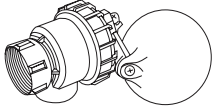
PRODUCT CODE:
POLNCL400

400L CENTRELINE TROUGH

FEATURES

- Water available to livestock on both sides of fence
- Float in the middle
- 1" float valve
- Raised float cover (allows trough to fill easily)
- Heavy duty construction (built to last)
- Manufactured from proven UV stabilised Australian standard material (tested in the field for over 25 years)
- Easy to maintain
- Designed for easy transportation and use

FREE INCLUSIONS

Float Cover	2" Drain Bung
	
Moulded-In 2" Brass Outlet	1" Float Valve
	

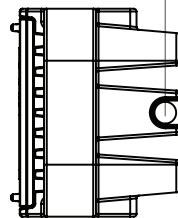
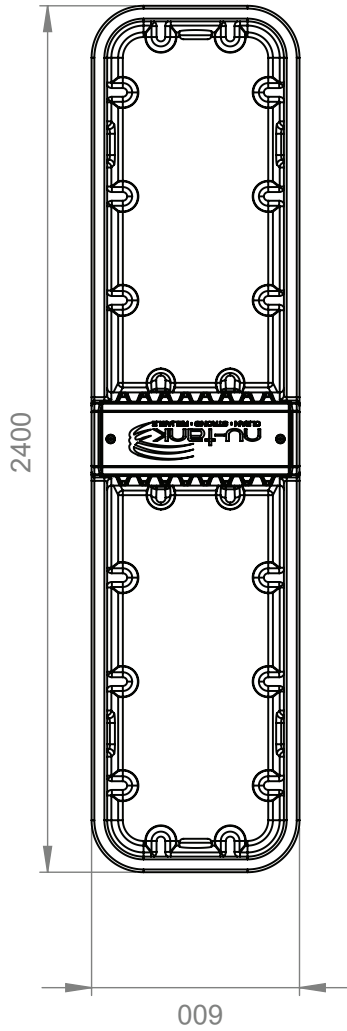
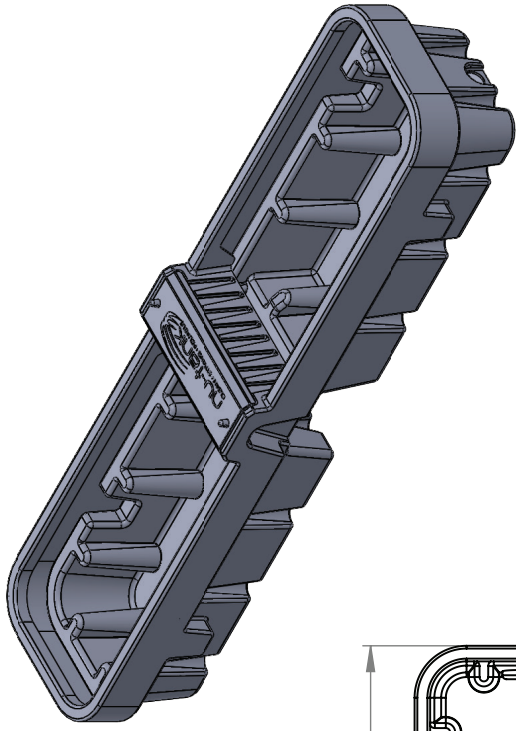
*Inclusions may change without notice, check with sales prior to ordering

COLOURS AVAILABLE

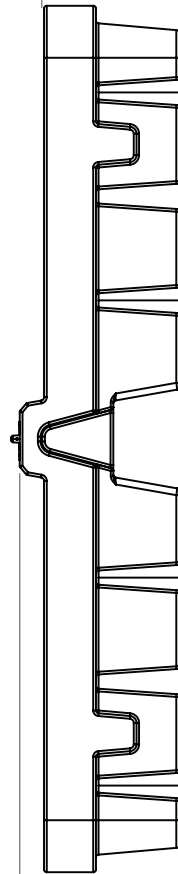


Slate Grey Trough Yellow Float Cover

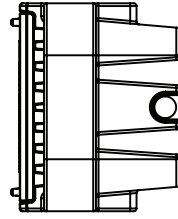
NB: Colours may vary due to screen and printer calibrations.



50



560



400

Details

Manufacturer's Name	Nu-Tank Pty Ltd
Trough Capacity	400 Litre
Specific Gravity	1.0
Maximum Design Service Temperature	23°C
Standard	AS/NZS 4766

All dimensions may vary ± 3% due to rotational moulding process.



PRODUCT CODE:

POLINCL400

DESCRIPTION

400 LITRE CENTRELINE TROUGH