

PRODUCT SHEET



LENGTH	2350 MM
WIDTH	910 MM
HEIGHT	510 MM

**PRODUCT CODE:
POLNWA750ST**

750L LONG SAFETY TREAD TROUGH

FEATURES

- Patented Safety Tread floor (allows livestock to grip easily)
- 2" low pressure float valve
- Float cover extends to bottom of trough (stops tampering when filling)
- Unique anti-crack lip design
- Raised float cover (allows trough to fill easily)
- Heavy duty construction (built to last)
- Manufactured from proven UV stabilised Australian standard material (tested in the field for over 25 years)
- Designed for easy transportation and use

COLOURS AVAILABLE



NB: Colours may vary due to screen and printer calibrations.

FREE INCLUSIONS

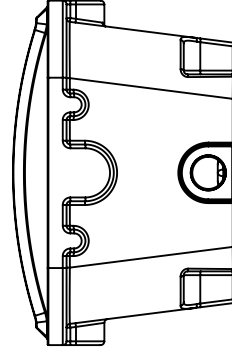
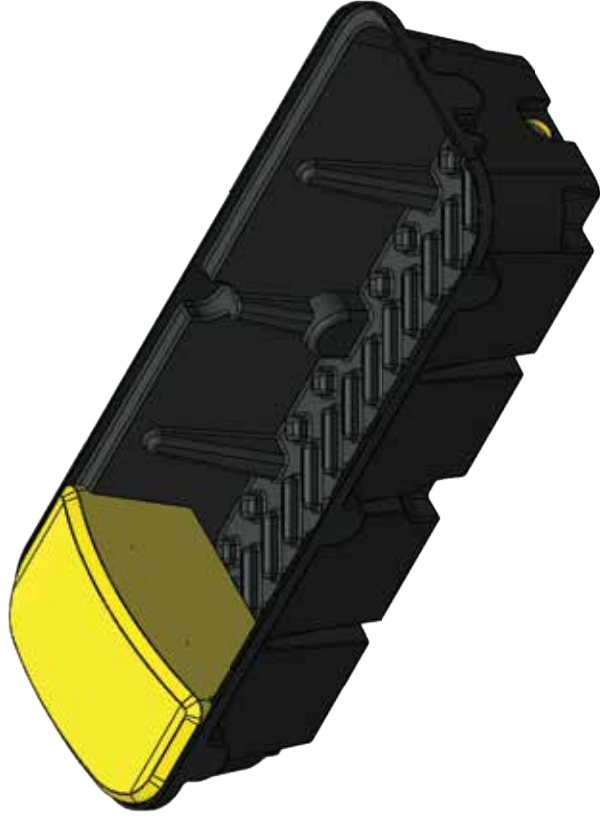
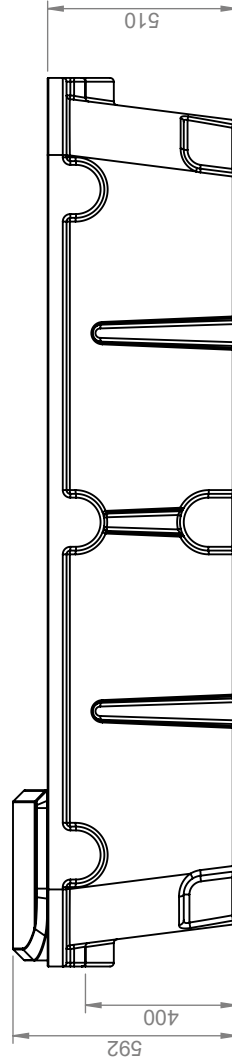
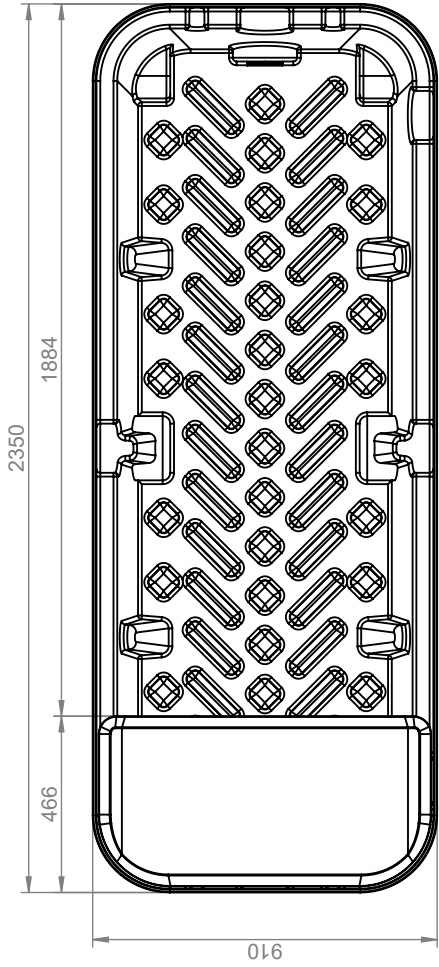
<p>Float Cover</p>	<p>3" Drain Bung</p>
<p>Moulded-in 3" Brass Outlet</p>	<p>2" Low Pressure Float</p>

*Inclusions may change without notice, check with sales prior to ordering

OPTIONAL EXTRAS

<p>1" or 1.5" Low Pressure Valve</p>	<p>1" High Pressure Valve</p>
--------------------------------------	-------------------------------

*Please contact sales for a free quote



Details

Manufacturer's Name	Nu-Tank Pty Ltd
Capacity	750 LITRES
Maximum Specific Gravity	1.0
Maximum Design Service Temperature	23 °c
Standard	AS/NZS 4766



PRODUCT CODE:

POLNWA750ST

DESCRIPTION:

750 LITRE LONG SAFTEY TREAD FLOAT TROUGH