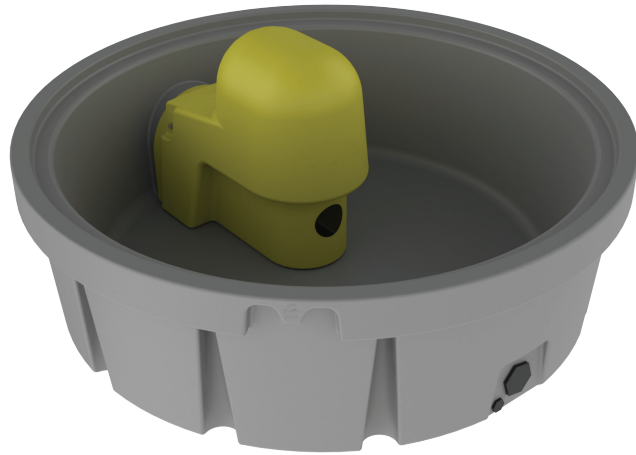


PRODUCT SHEET



DIAMETER	1940 MM
HEIGHT	600 MM
OVERALL HEIGHT	815 MM

**PRODUCT CODE:
 PORNCO1000**

1,000L CROSSOVER TROUGH

FEATURES

- Double walled
- Made from Virgin Grade, Australian Made materials (not recycled)
- Heavy Duty, UV stabilised polyethylene
- Food grade
- Comes with secured float cover
- 3" drain bung
- Lightweight when empty
- Easy to maintain

FREE INCLUSIONS

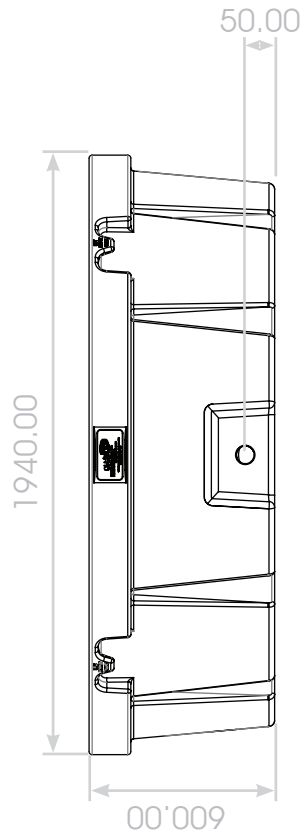
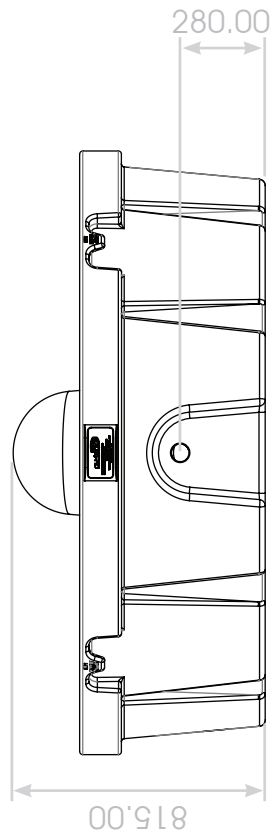
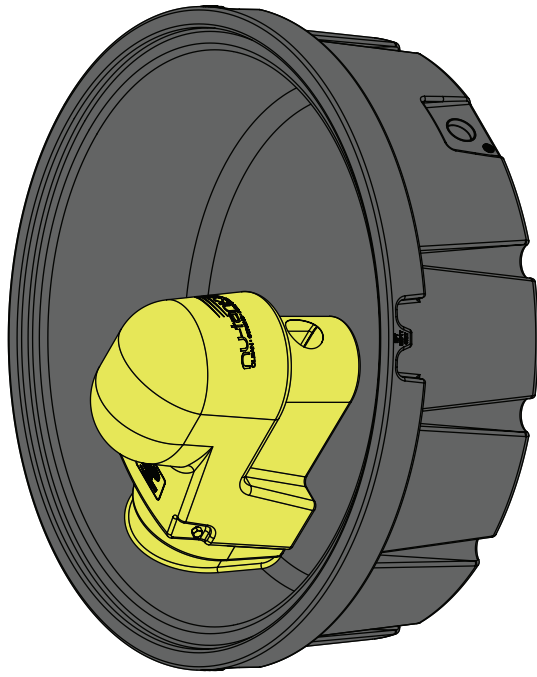
3" Drain Bung	Moulded-in 3" Brass Outlet
2" Chain Float	Float cover

*Inclusions may change without notice, check with sales prior to ordering

COLOURS AVAILABLE



NB: Colours may vary due to screen and printer calibrations.



Details

Manufacturer's Name	Nu-Tank Pty Ltd
Tank Capacity	1000L
Maximum Specific Gravity	1.0
Maximum Design Service Temperature	23° c
Standard	AS/NZS4766



PRODUCT CODE:

PORNCO1000

DESCRIPTION

1000L ROUND CROSSOVER TROUGH