

PRODUCT SHEET

VIEW THIS
PRODUCT
ONLINE



DIAMETER	1150MM
HEIGHT	450MM
OVERALL HEIGHT	570MM

All dimensions may vary $\pm 3\%$ due to rotational moulding process.




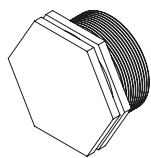
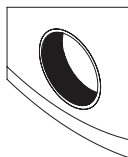
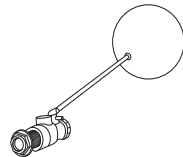
**PRODUCT CODE:
PORNWA220**

220L ROUND WATER TROUGH

FEATURES

- Low pressure float valve and large 3" drain
- Float cover extends to base of trough (stops tampering when filling)
- Unique anti-crack lip design
- Raised float cover allows trough to fill
- Heavy duty construction (won't crack or perish)
- Manufactured from virgin grade materials - NOT recycled
- Smooth internal surface for easy cleaning
- Stackable for transport and storage
- Easily relocatable

FREE INCLUSIONS

Float Cover	3" Drain Bung
	
Moulded-In 3" Brass Outlet	2" Low Pressure Float Kit
	

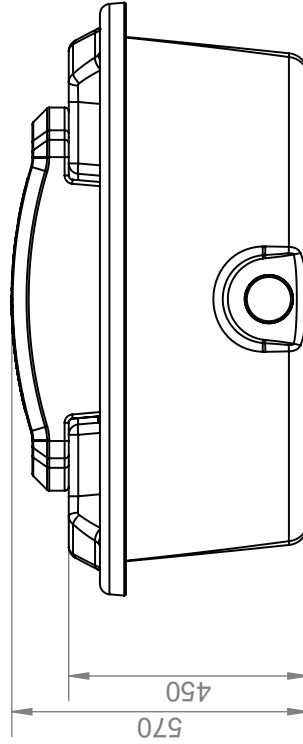
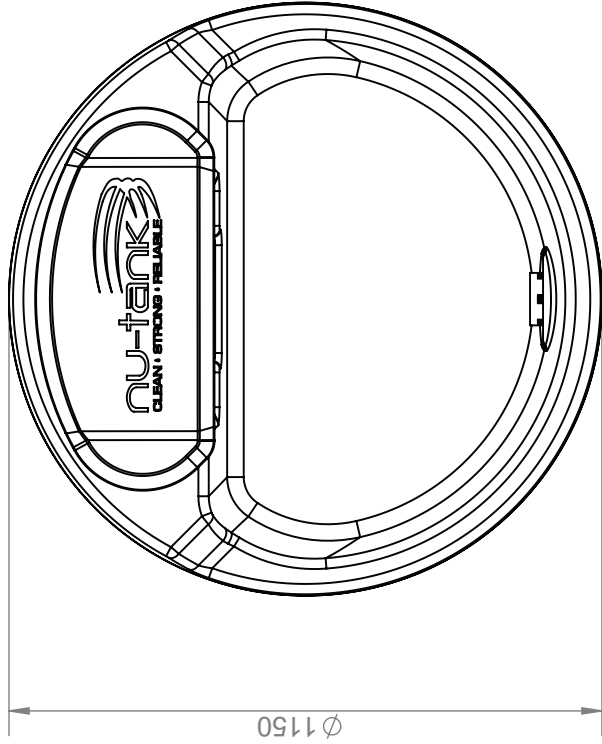
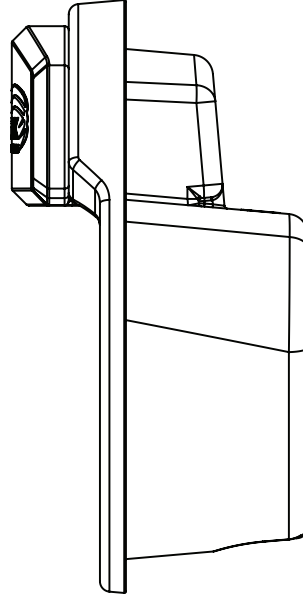
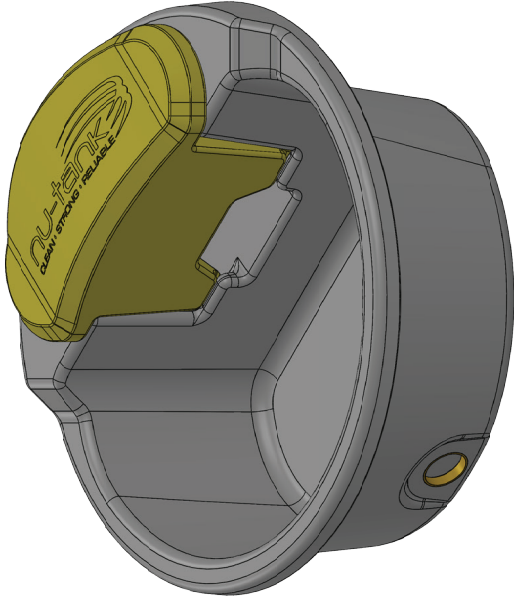
*Inclusions may change without notice, check with sales prior to ordering

COLOURS AVAILABLE



Slate Grey Trough Yellow Float Cover

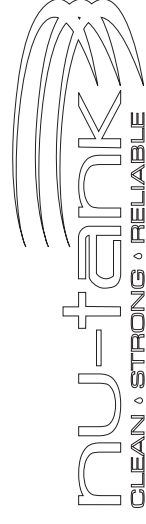
NB: Colours may vary due to screen and printer calibrations.



Details

Manufacturer's Name	Nu-Tank Pty Ltd		
Trough Capacity	220 Litre		
Specific Gravity	1.0		
Maximum Design Service Temperature	23°C		
Standard	AS/NZS 4766		

All dimensions may vary $\pm 3\%$ due to rotational moulding process.



PRODUCT CODE:

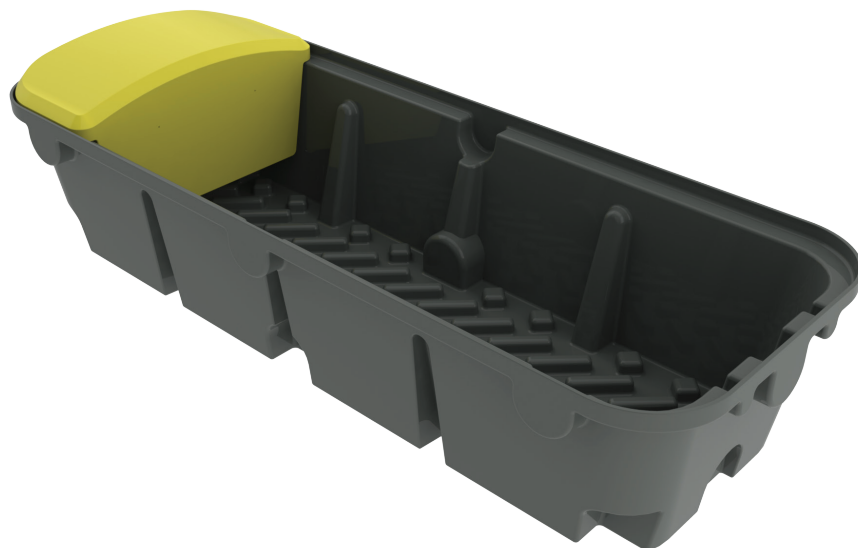
PORNWA220

DESCRIPTION

220L ROUND WATER TROUGH

PRODUCT SHEET

VIEW THIS
PRODUCT
ONLINE



LENGTH	2350MM
WIDTH	910MM
HEIGHT	510MM

All dimensions may vary $\pm 3\%$ due to rotational moulding process.


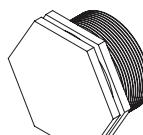
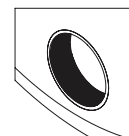
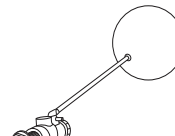
PRODUCT CODE:
POLNWA750

750L LONG SAFETY TREAD TROUGH

FEATURES

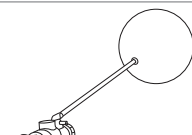
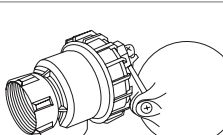
- Patented Safety Tread floor (allows livestock to grip easily)
- 2" low pressure float valve
- Float cover extends to bottom of trough (stops tampering when filling)
- Unique anti-crack lip design
- Raised float cover (allows trough to fill easily)
- Heavy duty construction (built to last)
- Manufactured from proven UV stabilised Australian standard material (tested in the field for over 25 years)
- Designed for easy transportation and use

FREE INCLUSIONS

Float Cover	3" Drain Bung
	
Moulded-In 3" Brass Outlet	2" Low Pressure Float Kit
	

*Inclusions may change without notice, check with sales prior to ordering

OPTIONAL EXTRAS

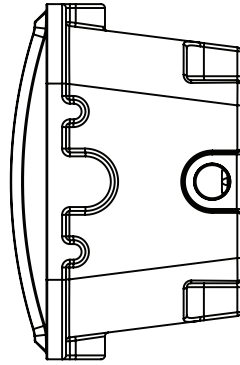
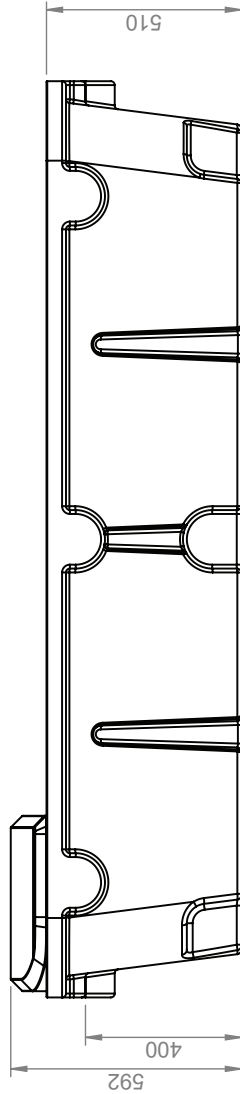
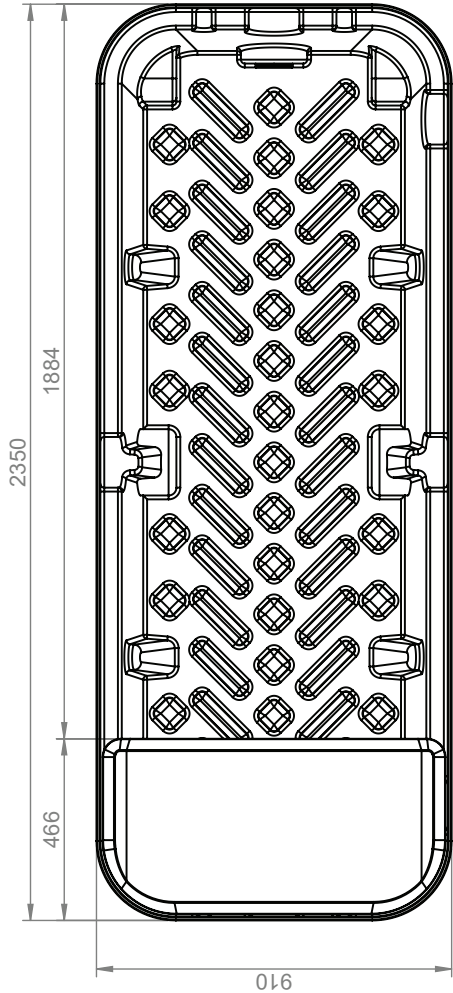
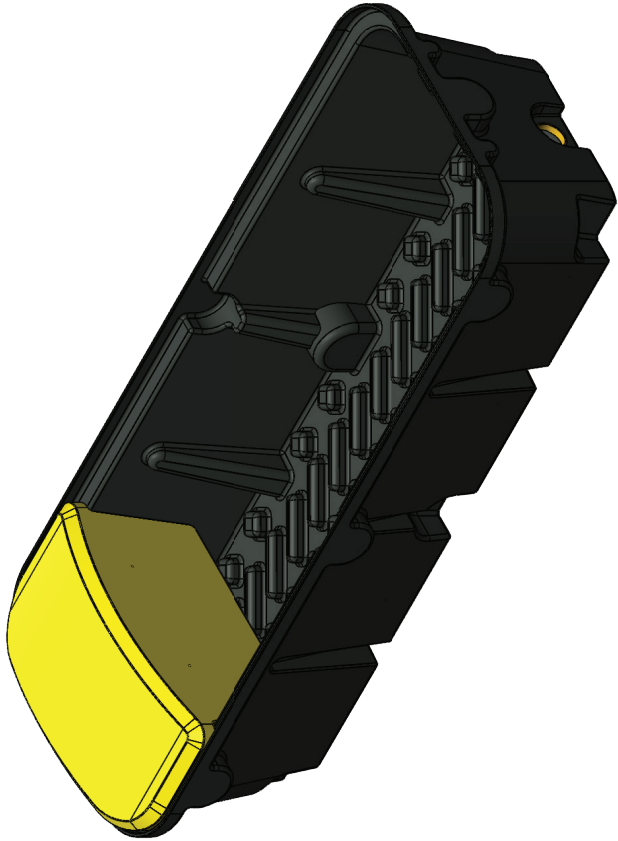
1" OR 1.5" Low Pressure Valve	1" High Pressure Float
	

*Inclusions may change without notice, check with sales prior to ordering

COLOURS AVAILABLE



NB: Colours may vary due to screen and printer calibrations.



Details

Manufacturer's Name	Nu-Tank Pty Ltd		
Trough Capacity	750 Litre		
Specific Gravity	1.0		
Maximum Design Service Temperature	23°C		
Standard	AS/NZS 4766		

All dimensions may vary $\pm 3\%$ due to rotational moulding process.



PRODUCT CODE:

POLNWA750

DESCRIPTION

750L LONG WATER TROUGH

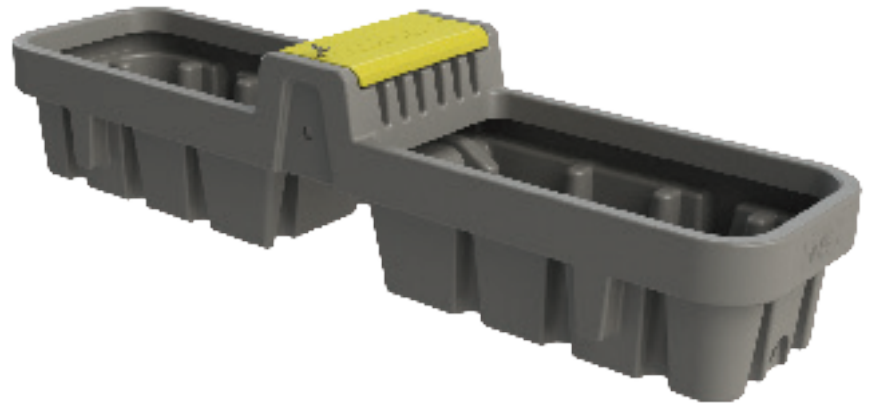
PRODUCT SHEET

VIEW THIS
PRODUCT
ONLINE



LENGTH	2400MM
WIDTH	600MM
HEIGHT	400MM
OVERALL HEIGHT	560MM

All dimensions may vary $\pm 3\%$ due to rotational moulding process.




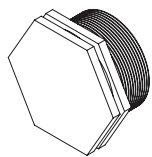
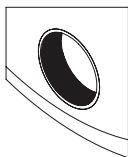
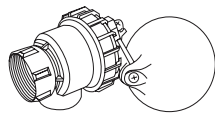
PRODUCT CODE:
POLNCL400

400L CENTRELINE TROUGH

FEATURES

- Water available to livestock on both sides of fence
- Float in the middle
- 1" float valve
- Raised float cover (allows trough to fill easily)
- Heavy duty construction (built to last)
- Manufactured from proven UV stabilised Australian standard material (tested in the field for over 25 years)
- Easy to maintain
- Designed for easy transportation and use

FREE INCLUSIONS

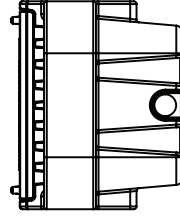
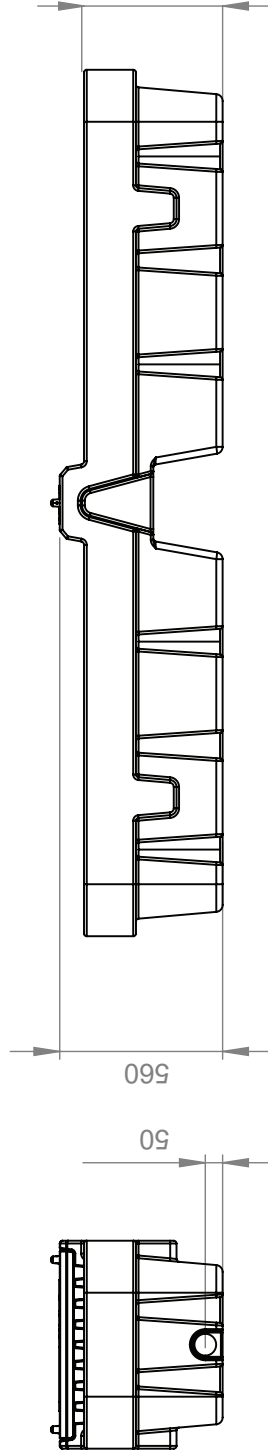
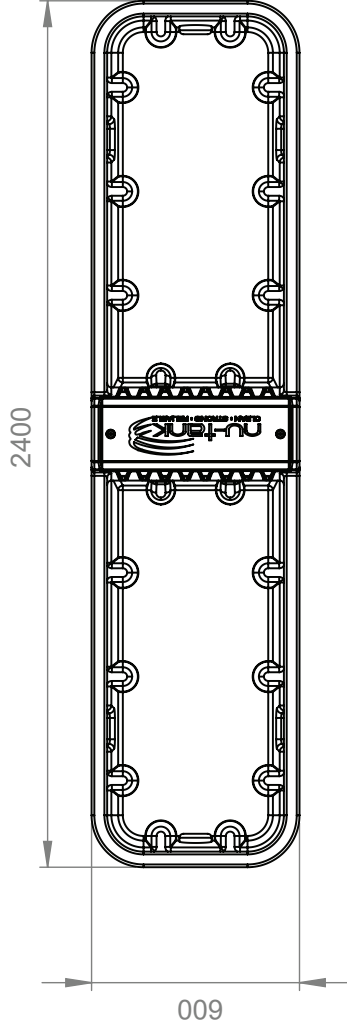
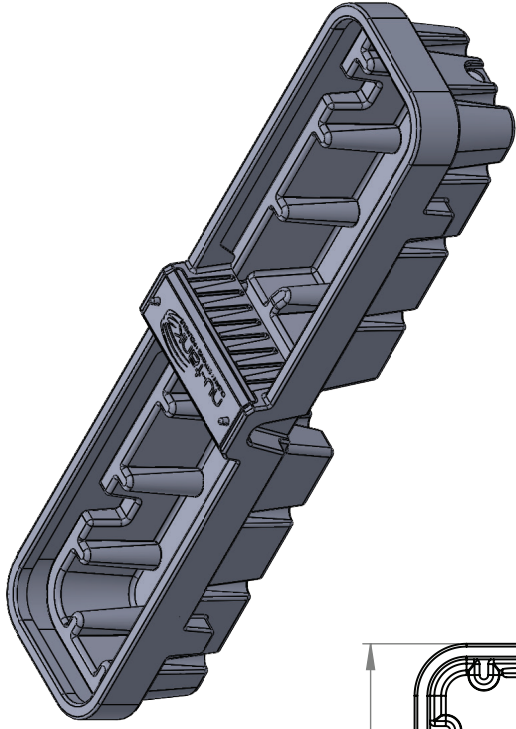
Float Cover	2" Drain Bung
	
Moulded-In 2" Brass Outlet	1" Float Valve
	

*Inclusions may change without notice, check with sales prior to ordering

COLOURS AVAILABLE



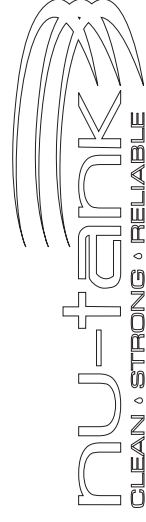
NB: Colours may vary due to screen and printer calibrations.



Details

Manufacturer's Name	Nu-Tank Pty Ltd
Trough Capacity	400 Litre
Specific Gravity	1.0
Maximum Design Service Temperature	23°C
Standard	AS/NZS 4766

All dimensions may vary $\pm 3\%$ due to rotational moulding process.



PRODUCT CODE:

POLINCL400

DESCRIPTION

400 LITRE CENTRELINE TROUGH

PRODUCT SHEET

VIEW THIS
PRODUCT
ONLINE



LENGTH	1700MM
WIDTH	600MM
HEIGHT	400MM
OVERALL HEIGHT	560MM

All dimensions may vary $\pm 3\%$ due to rotational moulding process.




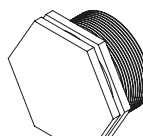
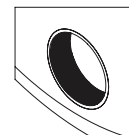
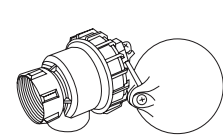
PRODUCT CODE:
POLNCL200

200L CENTRELINE TROUGH

FEATURES

- Water available to livestock on both sides of fence
- Float in the middle
- 1" float valve
- Raised float cover (allows trough to fill easily)
- Heavy duty construction (built to last)
- Manufactured from proven UV stabilised Australian standard material (tested in the field for over 25 years)
- Easy to maintain
- Designed for easy transportation and use

FREE INCLUSIONS

Float Cover	2" Drain Bung
	
Moulded-In 2" Brass Outlet	1" Float Valve
	

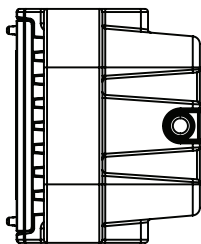
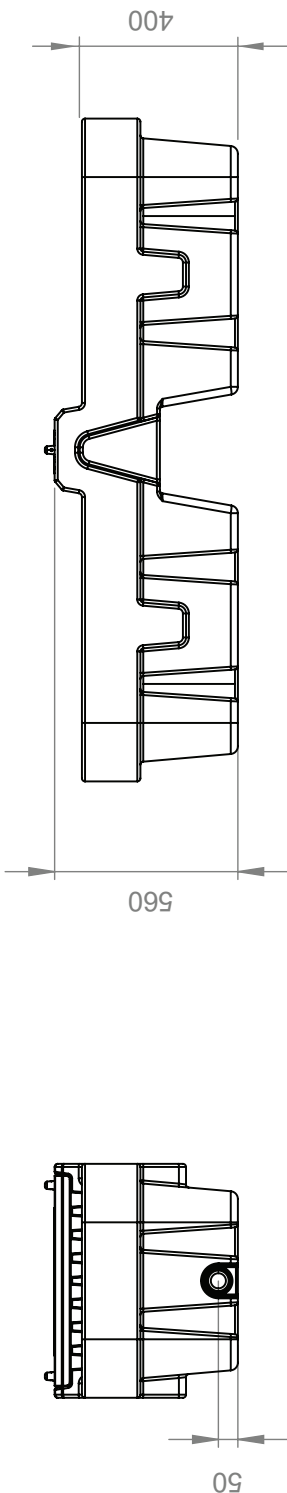
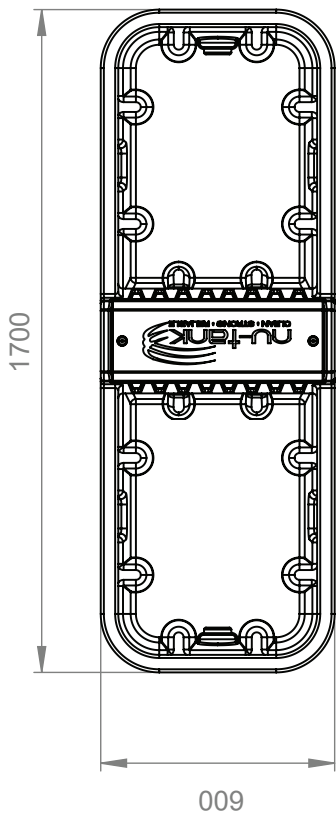
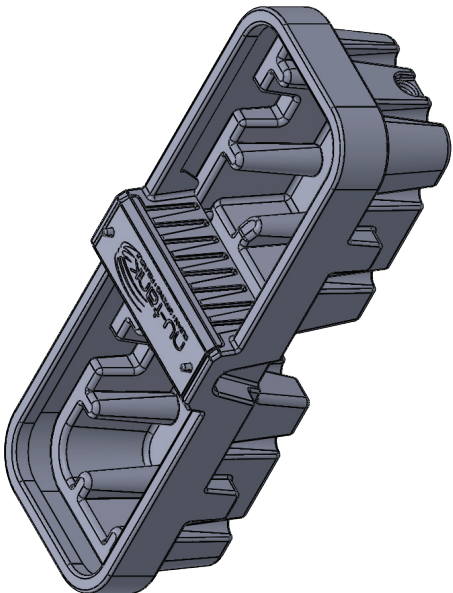
*Inclusions may change without notice, check with sales prior to ordering

COLOURS AVAILABLE



Slate Grey Trough Yellow Float Cover

NB: Colours may vary due to screen and printer calibrations.



Details

Manufacturer's Name	Nu-Tank Pty Ltd
Trough Capacity	200 Litre
Specific Gravity	1.0
Maximum Design Service Temperature	23°C
Standard	AS/NZS 4766

All dimensions may vary $\pm 3\%$ due to rotational moulding process.



PRODUCT CODE:

POLINCL200

DESCRIPTION

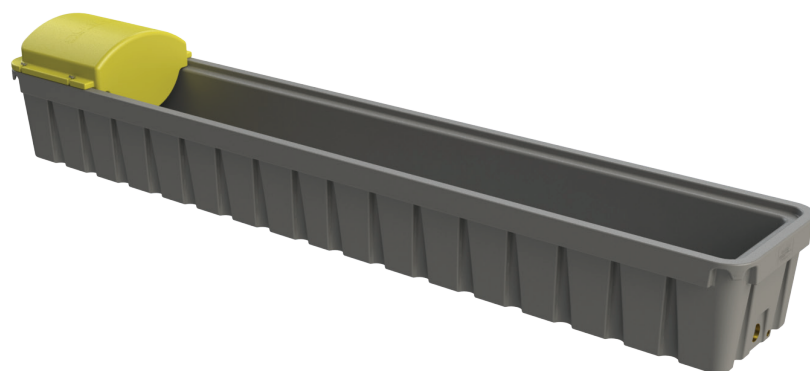
200 LITRE CENTRELINE TROUGH

PRODUCT SHEET

LENGTH	5050MM
WIDTH	900MM
HEIGHT	600MM
OVERALL HEIGHT	865MM

All dimensions may vary $\pm 3\%$ due to rotational moulding process.

PRODUCT CODE:
POLNCO1200


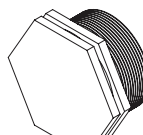
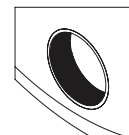
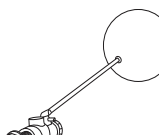


1,200L LONG CROSSOVER TROUGH

FEATURES

- Double walled
- Made from Virgin Grade materials (not recycled)
- Heavy Duty, UV stabilised polyethylene
- Food grade
- Comes with secured float cover
- 3" drain bung
- Lightweight when empty
- Easy to maintain

FREE INCLUSIONS

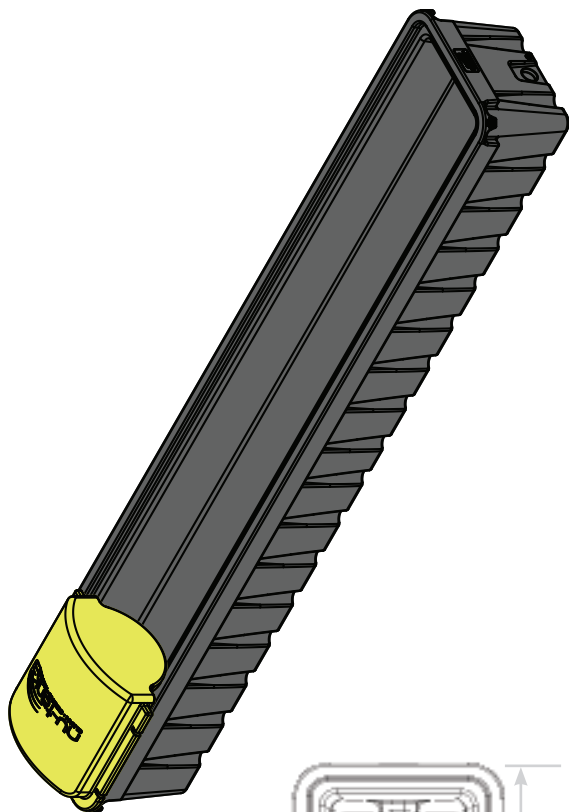
Float Cover	3" Drain Bung
	
Moulded-In 3" Brass Outlet	2" Low Pressure Float
	

*Inclusions may change without notice, check with sales prior to ordering

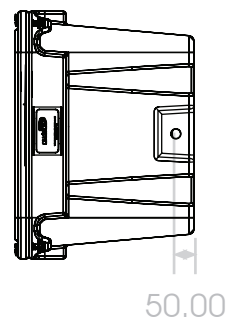
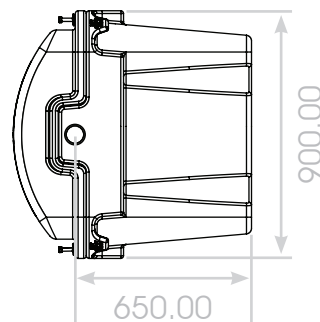
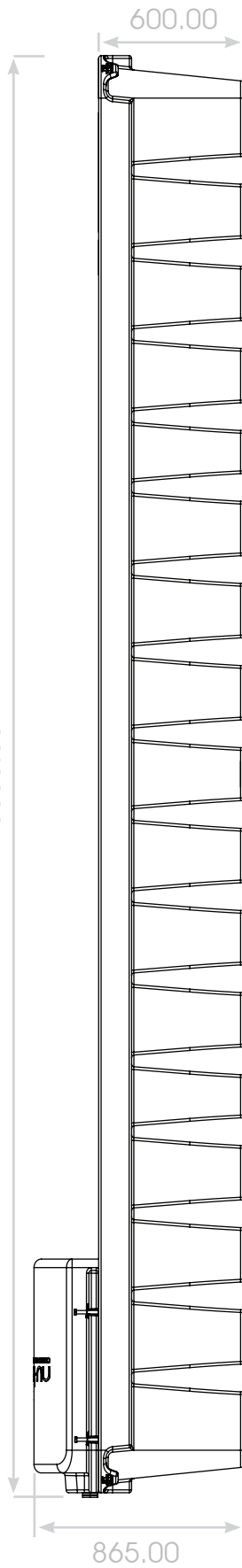
COLOURS AVAILABLE



NB: Colours may vary due to screen and printer calibrations.



5050.00



PRODUCT CODE:

POLNCO1200

DESCRIPTION

1,200 LITRE LONG CROSSOVER TROUGH

Details

Manufacturer's Name	Nu-Tank Pty Ltd
Trough Capacity	1200 Litre
Specific Gravity	1.0
Maximum Design Service Temperature	23°C
Standard	AS/NZS 4766

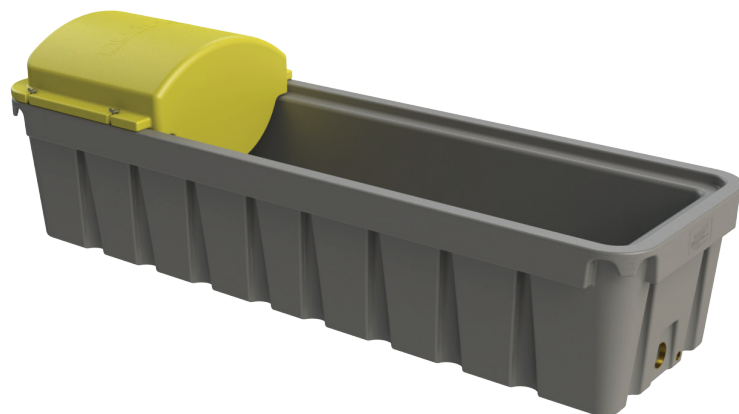
All dimensions may vary $\pm 3\%$ due to rotational moulding process.

PRODUCT SHEET

LENGTH	2800MM
WIDTH	900MM
HEIGHT	600MM
OVERALL HEIGHT	865MM

All dimensions may vary $\pm 3\%$ due to rotational moulding process.

PRODUCT CODE:
POLNCO650


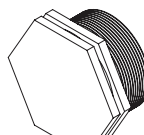
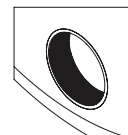
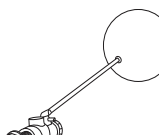


650L LONG CROSSOVER TROUGH

FEATURES

- Double walled
- Made from Virgin Grade materials (not recycled)
- Heavy Duty, UV stabilised polyethylene
- Food grade
- Comes with secured float cover
- 3" drain bung
- Lightweight when empty
- Easy to maintain

FREE INCLUSIONS

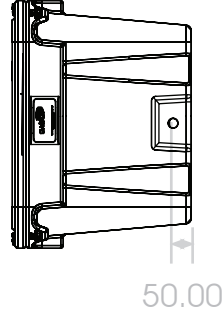
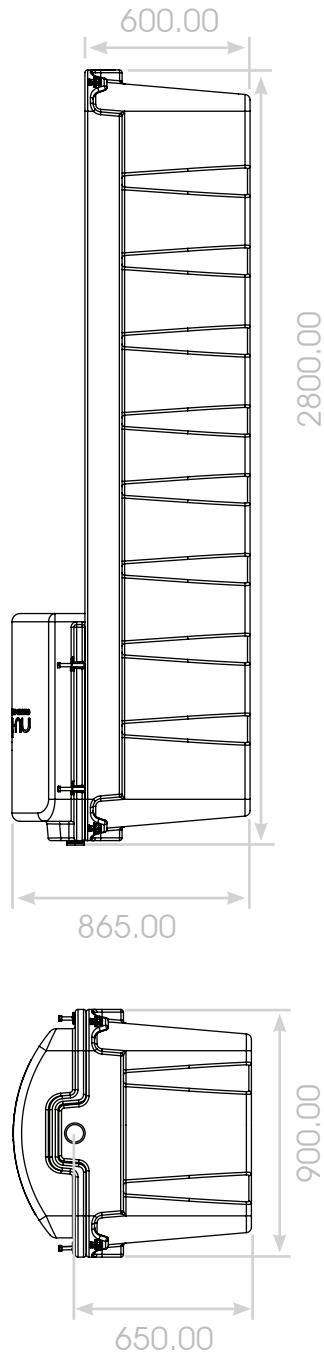
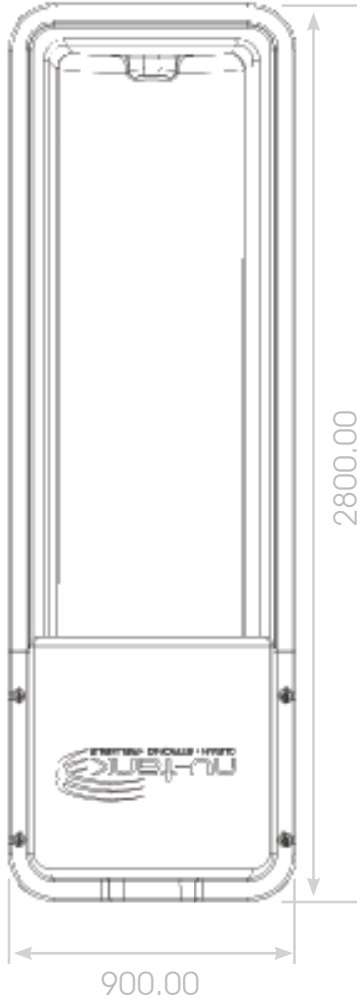
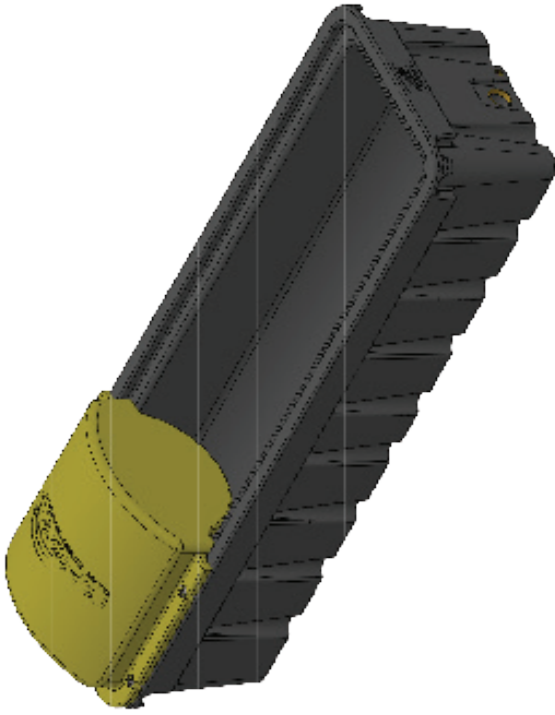
Float Cover	3" Drain Bung
	
Moulded-In 3" Brass Outlet	2" Low Pressure Float
	

*Inclusions may change without notice, check with sales prior to ordering

COLOURS AVAILABLE



NB: Colours may vary due to screen and printer calibrations.



Details

Manufacturer's Name	Nu-Tank Pty Ltd		
Trough Capacity	650 Litre		
Specific Gravity	1.0		
Maximum Design Service Temperature	23°C		
Standard	AS/NZS 4766		

All dimensions may vary $\pm 3\%$ due to rotational moulding process.



PRODUCT CODE:

POLNCO650

DESCRIPTION

650 LITRE LONG CROSSOVER TROUGH