

PRODUCT SHEET



TANK	
LENGTH	1450 MM
WIDTH	1255 MM
HEIGHT	870 MM

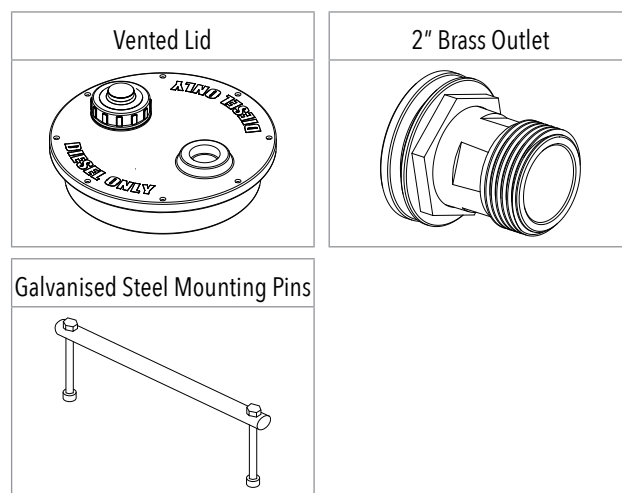
PRODUCT CODE:
PTCTDI1000

1,000L DIESEL TRANSPORT TANK

FEATURES

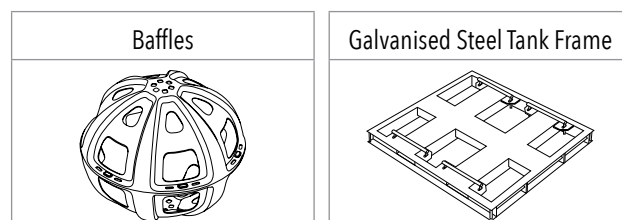
- Cast diesel lid with lockable inlet mesh filter, 4m earth strap and breather
- Heavy duty construction (built to last)
- Manufactured from UV stabilised virgin grade materials (not recycled)
- Secure mounting points in each leg
- 2 year warranty
- Tanks manufactured from Diesel grade material to AS 2809.2.2008
- Outlet fittings available in sizes 1", 1½" or 2"

FREE INCLUSIONS



*Inclusions may change without notice, check with sales prior to ordering.

OPTIONAL EXTRAS



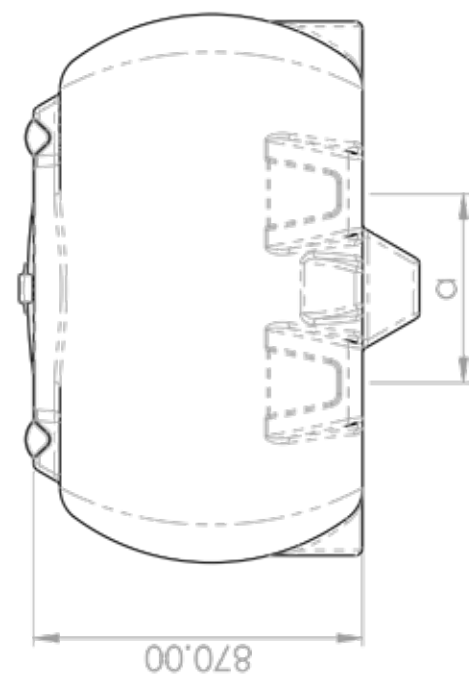
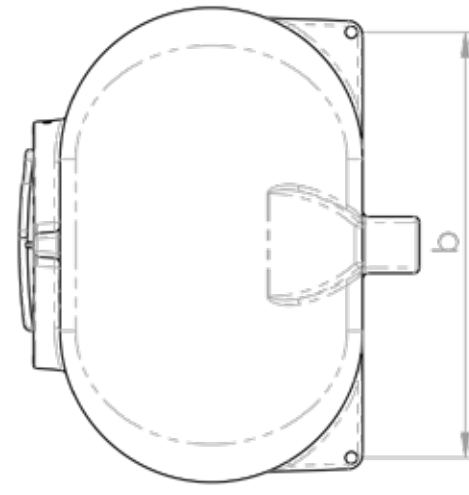
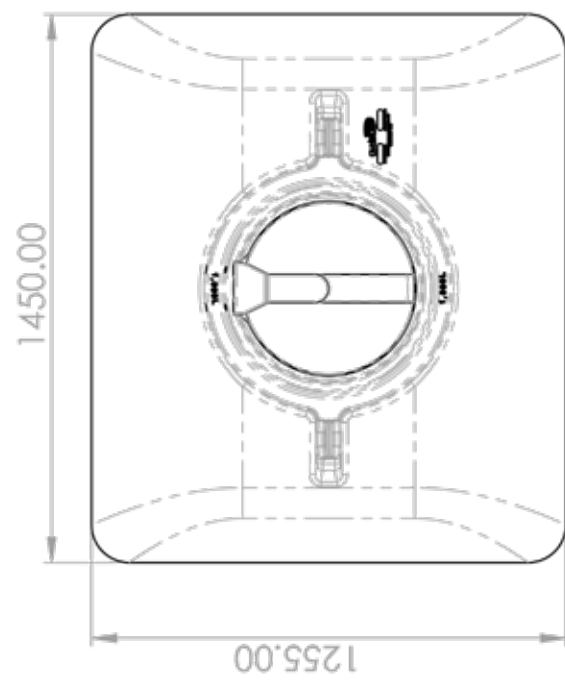
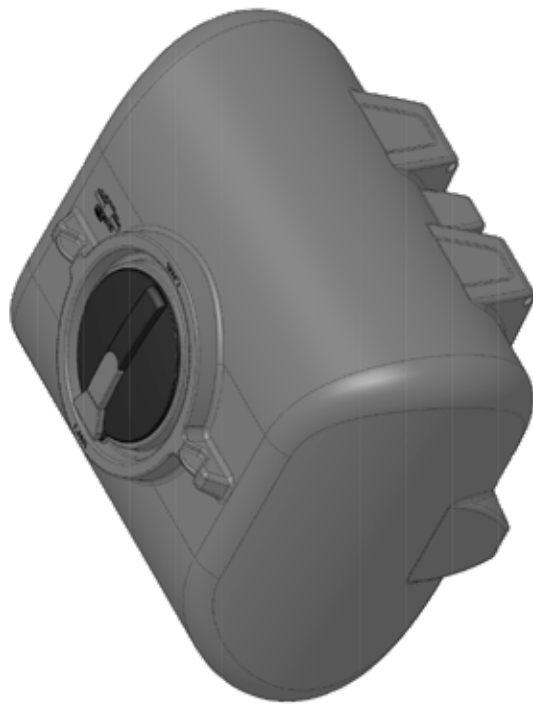
*Various outlet types and sizes also available, please contact sales for a free quote.

COLOURS AVAILABLE



Grey

NB: Colours may vary due to screen and printer calibrations.



PRODUCT CODE: PTCTWA1000
DESCRIPTION: 1000 LITRE WATER/ SPRAY CARTAGE TANK

Leg Pitch (a)	Foot Pin Pitch (b)
500 mm	1125 mm