

## PRODUCT SHEET

TANK	
LENGTH	2350 MM
WIDTH	1820 MM
HEIGHT	1475 MM



**PRODUCT CODE:**  
**PTCTDI5000**

## 5,000L DIESEL TRANSPORT TANK

### FEATURES

- Cast diesel lid with lockable inlet mesh filter, 4m earth strap and breather
- Heavy duty construction (built to last)
- Manufactured from UV stabilised virgin grade materials (not recycled)
- Secure mounting points in each leg
- 2 year warranty
- Tanks manufactured from Diesel grade material to AS 2809.2.2008
- Outlet fittings available in sizes 1", 1½" or 2"

### FREE INCLUSIONS

<p>Vented Lid</p>	<p>2" Brass Outlet</p>
<p>Galvanised Steel Mounting Pins</p>	

\*Inclusions may change without notice, check with sales prior to ordering.

### OPTIONAL EXTRAS

<p>Baffles</p>	<p>Galvanised Steel Tank Frame</p>
----------------	------------------------------------

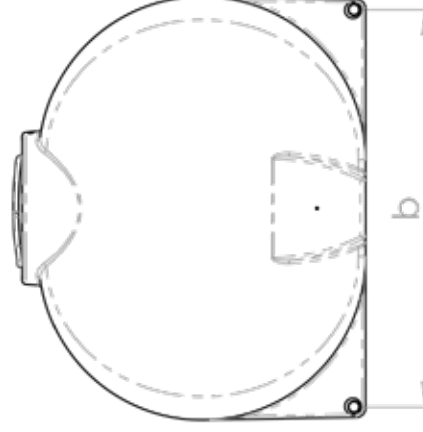
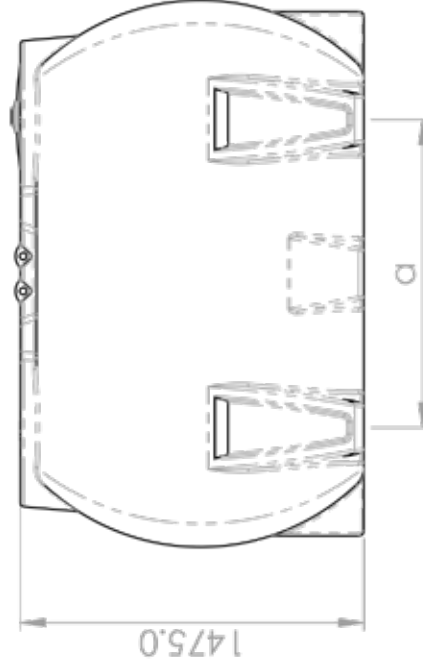
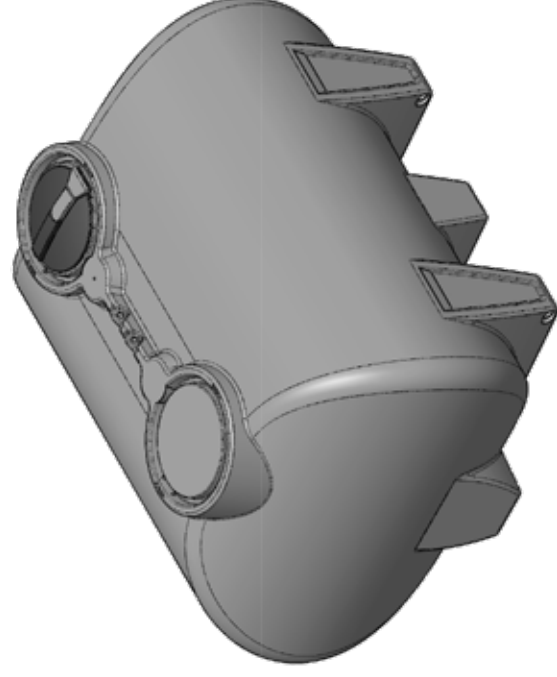
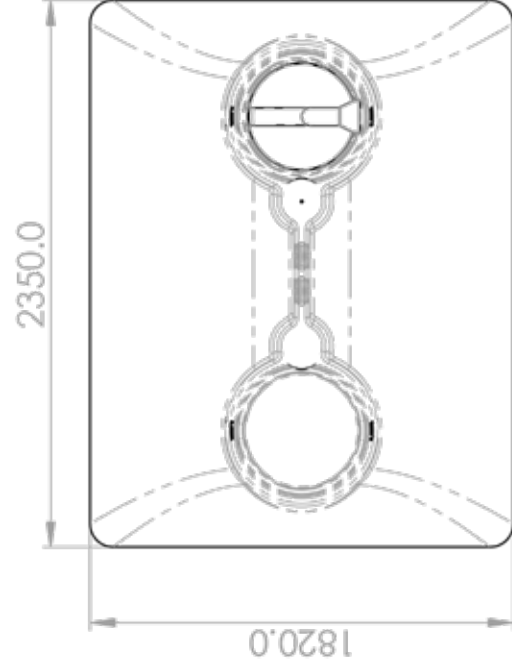
\*Various outlet types and sizes also available, please contact sales for a free quote.

### COLOURS AVAILABLE



Grey

NB: Colours may vary due to screen and printer calibrations.



Leg Pitch (a)	Foot Pin Pitch (b)
1325 mm	1710mm



PRODUCT CODE: PTCTDI5000  
DESCRIPTION: 5000 LITRE DIESEL CARTAGE TANK