

PRODUCT SHEET



TANK	
LENGTH	1875 MM
WIDTH	1420 MM
HEIGHT	1100 MM

PRODUCT CODE:
PTCTMO2000

2,000L MOLASSES TRANSPORT TANK

FEATURES

- Spill prevention shroud with 455mm hinged lid
- Heavy duty construction (built to last)
- Manufactured from UV stabilised virgin grade materials (not recycled)
- Secure mounting points in each leg
- Complies with relevant Australian Standards
- Australian Made - Australian Owned

FREE INCLUSIONS

Hinged Lid 	Welded Stub Flange¹
Galvanised Steel Mounting Pins 	

¹ Welded Stub Flange sizes available in 3", 4" and 6"

*Inclusions may change without notice, check with sales prior to ordering.

OPTIONAL EXTRAS

Baffles 	Galvanised Steel Tank Frame
--------------------	--

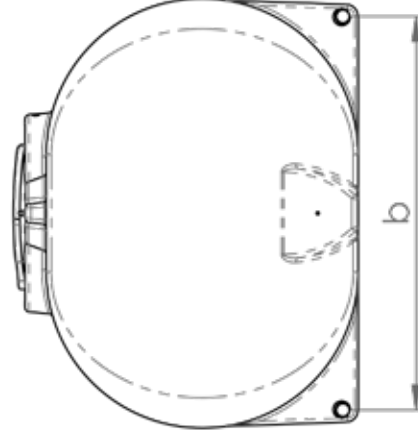
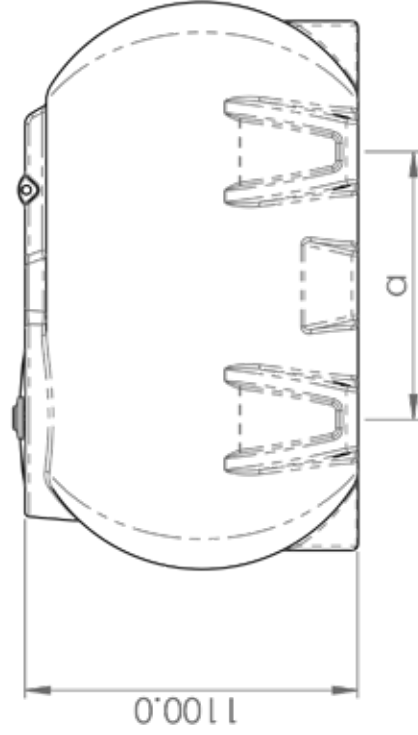
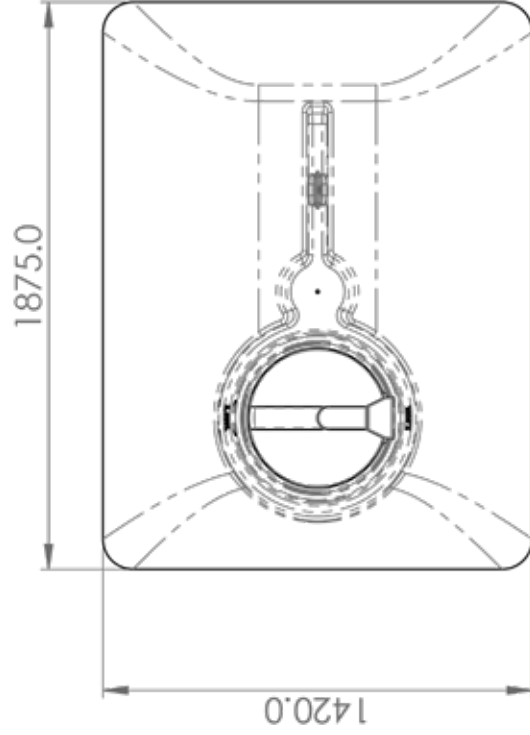
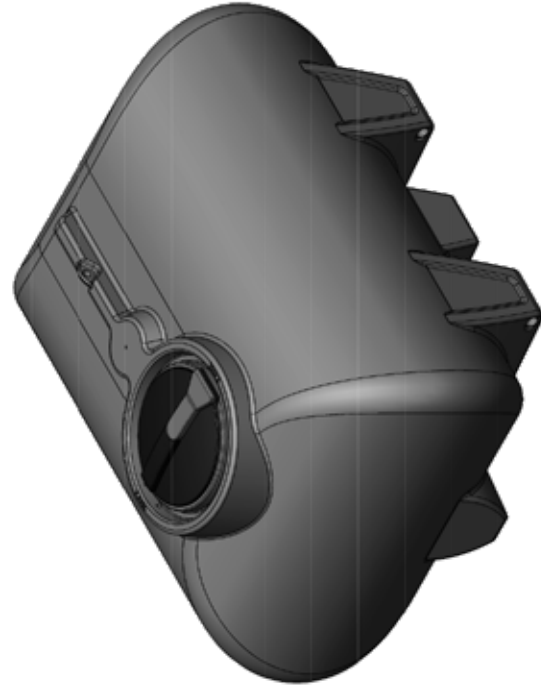
*Various outlet types and sizes also available, please contact sales for a free quote.

COLOURS AVAILABLE



Black

NB: Colours may vary due to screen and printer calibrations.



Leg Pitch (a)	Foot Pin Pitch (b)
885 mm	1302 mm



PRODUCT CODE:

PTCTMO2000

DESCRIPTION:

2000 LITRE MOLASSES CARTAGE TANK