

## PRODUCT SHEET

TANK	
LENGTH	2400 MM
WIDTH	1700 MM
HEIGHT	1400 MM



**PRODUCT CODE:**  
**PTCTMO4000**

## 4,000L MOLASSES TRANSPORT TANK

### FEATURES

- Spill prevention shroud with 455mm hinged lid
- Heavy duty construction (built to last)
- Manufactured from UV stabilised virgin grade materials (not recycled)
- Secure mounting points in each leg
- Complies with relevant Australian Standards
- Australian Made - Australian Owned

### FREE INCLUSIONS

<p>Hinged Lid</p>	<p>Welded Stub Flange<sup>1</sup></p>
<p>Galvanised Steel Mounting Pins</p>	

<sup>1</sup> Welded Stub Flange sizes available in 3", 4" and 6"

\*Inclusions may change without notice, check with sales prior to ordering.

### OPTIONAL EXTRAS

<p>Baffles</p>	<p>Galvanised Steel Tank Frame</p>
----------------	------------------------------------

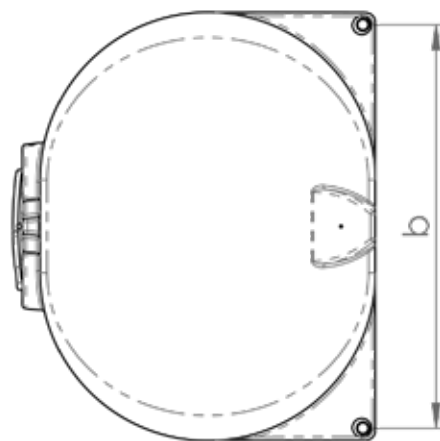
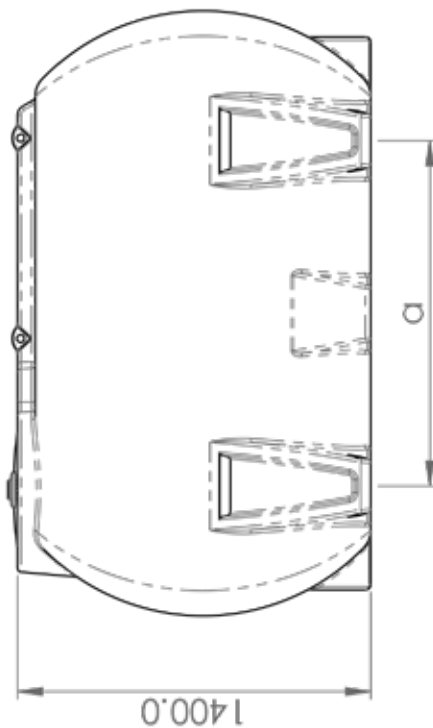
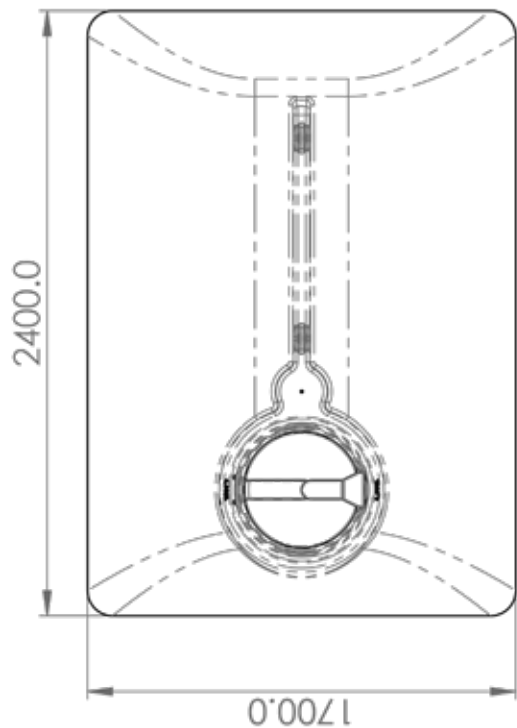
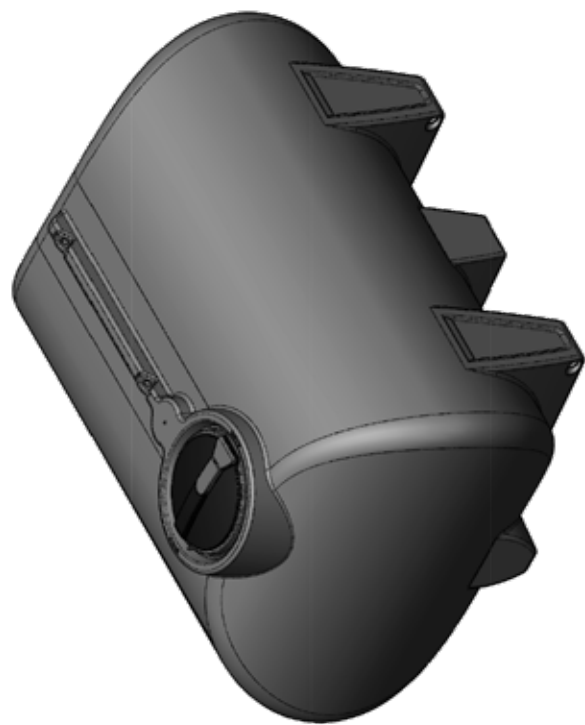
\*Various outlet types and sizes also available, please contact sales for a free quote.

### COLOURS AVAILABLE



Black

NB: Colours may vary due to screen and printer calibrations.



Leg Pitch (a)	Foot Pin Pitch (b)
1370 mm	1605 mm



PRODUCT CODE:

PTCTMO4000

DESCRIPTION:

4000 LITRE MOLASSES CARTAGE TANK