

PRODUCT SHEET

VIEW THIS
PRODUCT
ONLINE



LENGTH	1450MM
WIDTH	1255MM
HEIGHT	715MM

All dimensions may vary $\pm 3\%$ due to rotational moulding process.



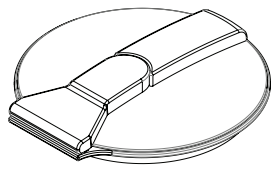
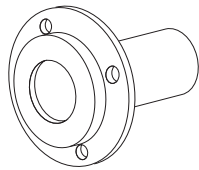
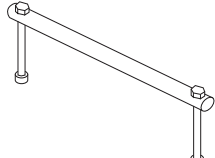
PRODUCT CODE:
PTCTMO800

800L MOLASSES TRANSPORT TANK

FEATURES

- Spill prevention shroud with 455mm hinged lid
- Heavy duty construction (built to last)
- Manufactured from UV stabilised virgin grade materials (not recycled)
- Secure mounting points in each leg
- Complies with relevant Australian Standards
- Australian Made - Australian Owned

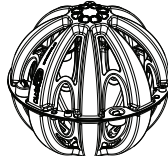
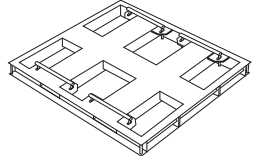
FREE INCLUSIONS

<p>Hinged Lid</p> 	<p>Welded Stub Flange¹</p> 
<p>Galvanised Steel Mounting Pins</p> 	

¹Welded Stub Flange sizes available in 3", 4" and 6"

*Inclusions may change without notice, check with sales prior to ordering

OPTIONAL EXTRAS

<p>Baffles</p> 	<p>Alloy Tank Frame</p> 
---	---

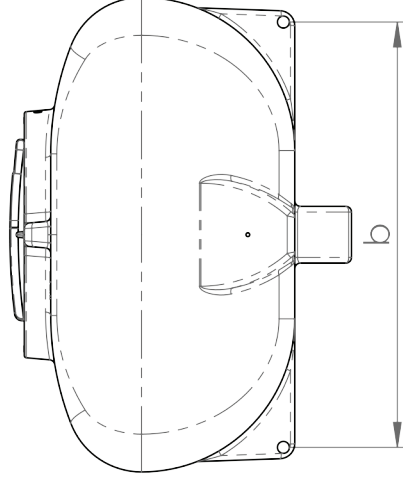
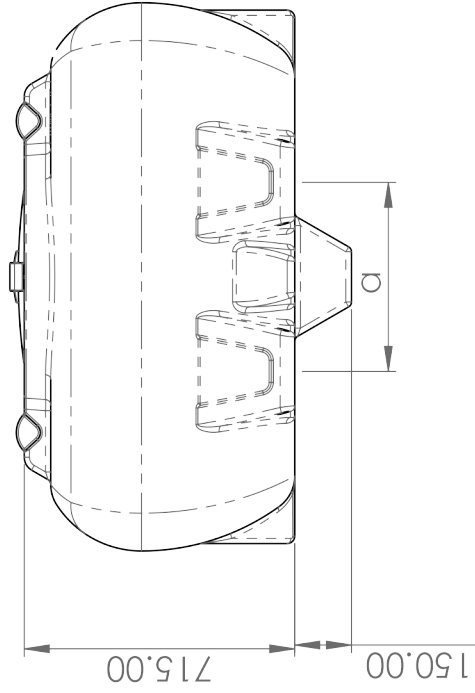
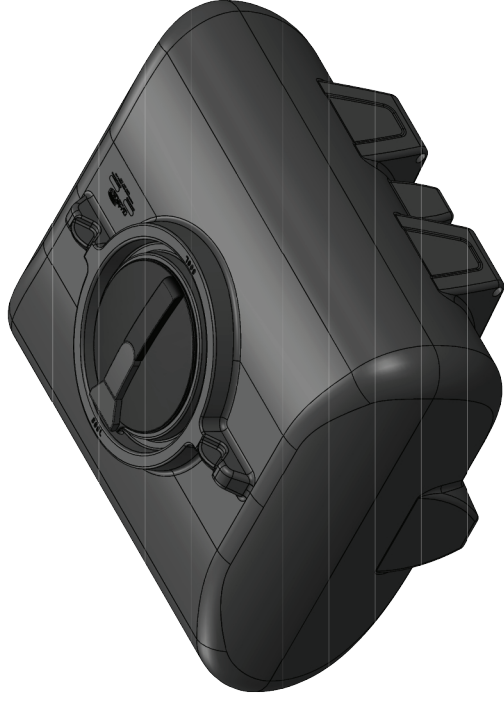
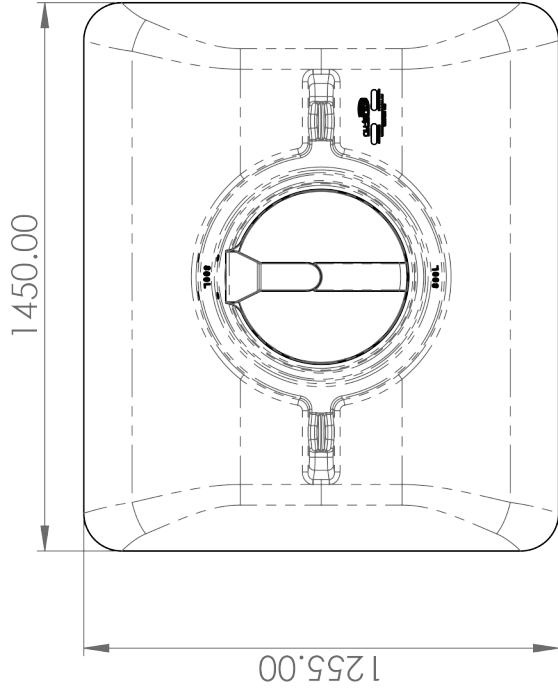
*Various outlet types and sizes also available, please contact sales for a free quote

COLOURS AVAILABLE



Black

NB: Colours may vary due to screen and printer calibrations.



Details

Manufacturer's Name	Nu-Tank Pty Ltd
Tank Capacity	800 Litres
Specific Gravity	1.6
Maximum Design Service Temperature	23°C
Standard	AS/NZS 4766

Leg Pitch (a)	500MM
Foot Pin Pitch (b)	1125MM



PRODUCT CODE:

PTCTM0800

DESCRIPTION

800 LITRE MOLASSES TRANSPORT TANK

All dimensions may vary ± 3% due to rotational moulding process.