

PRODUCT SHEET

VIEW THIS
PRODUCT
ONLINE



| | |
|--------|--------|
| LENGTH | 3340MM |
| WIDTH | 2040MM |
| HEIGHT | 1670MM |

All dimensions may vary \pm 3% due to rotational moulding process.

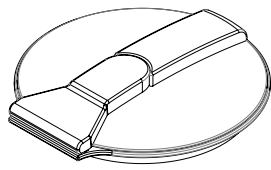
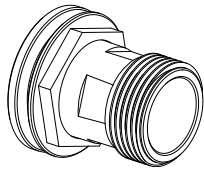
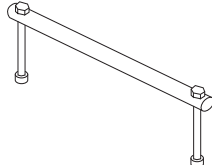
**PRODUCT CODE:
PTCTWA8000**

8,000L WATER / SPRAY TRANSPORT TANK

FEATURES


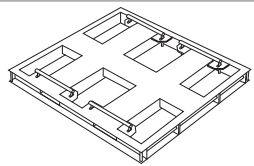
- Spill prevention shroud with 455mm hinged lid
- Heavy duty construction (built to last)
- Manufactured from UV stabilised virgin grade materials (not recycled)
- Secure mounting points in each leg
- Complies with relevant Australian Standards
- Australian Made - Australian Owned
- 20 year warranty

FREE INCLUSIONS

| | |
|--|---|
| Hinged Lid | 3" Brass Outlet |
|  |  |
| Galvanised Steel Mounting Pins | |
|  | |

*Inclusions may change without notice, check with sales prior to ordering

OPTIONAL EXTRAS

| | |
|--|---|
| Baffles | Alloy Tank Frame |
|  |  |

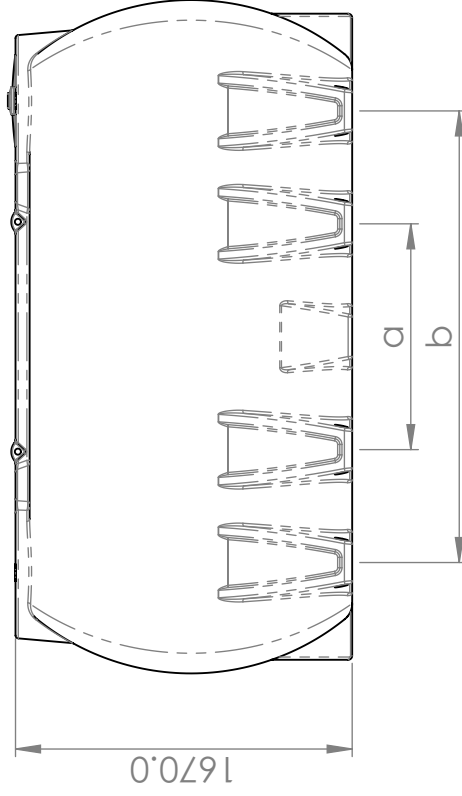
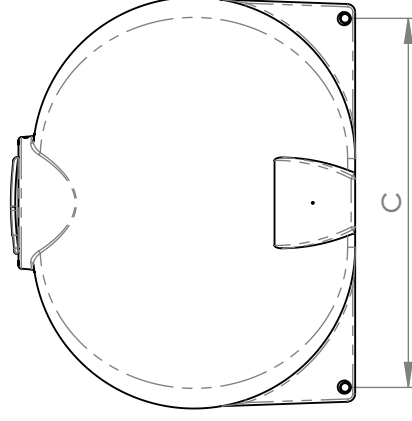
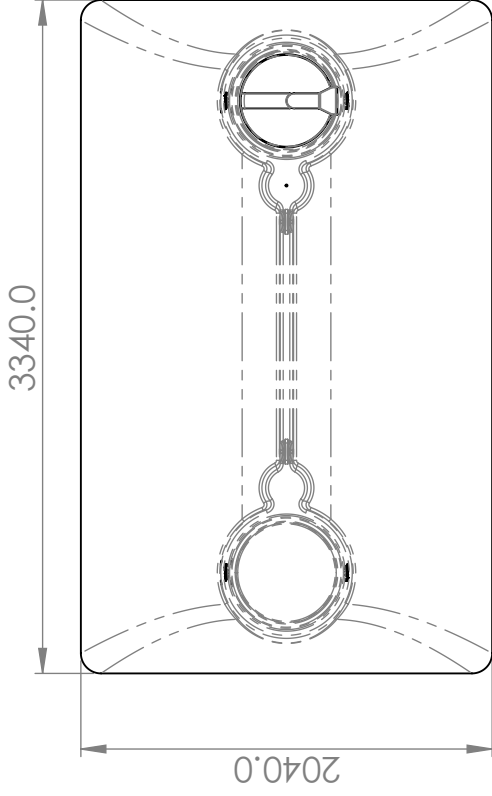
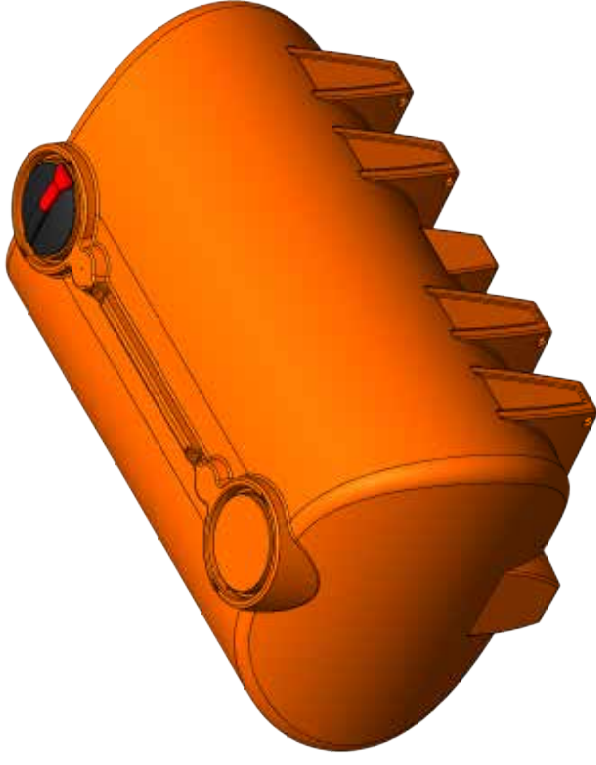
*Various outlet types and sizes also available, please contact sales for a free quote

COLOURS AVAILABLE



Orange

NB: Colours may vary due to screen and printer calibrations.



PRODUCT CODE:
PTCTWA8000

DESCRIPTION
8,000 LITRE WATER TRANSPORT TANK

Details

| | |
|------------------------------------|-----------------|
| Manufacturer's Name | Nu-Tank Pty Ltd |
| Tank Capacity | 8,000 Litre |
| Specific Gravity | 1.0 |
| Maximum Design Service Temperature | 23°C |
| Standard | AS/NZS 4766 |

| | |
|--------------------|--------|
| Leg Pitch (a) | 1120MM |
| Leg Pitch (b) | 2235MM |
| Foot Pin Pitch (c) | 1830MM |

All dimensions may vary ± 3% due to rotational moulding process.