

PRODUCT SHEET



Tank as seen in Monument

DIAMETER 1250 MM

INLET HEIGHT 1310 MM

PRODUCT CODE:
PTRNWA330

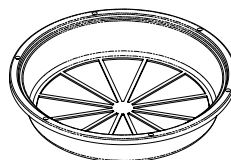
330GAL / 1,500L WATER TANK

FEATURES

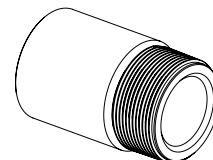
- Fully self supporting roof (no internal poles or frames)
- Manufactured from proven UV stabilised Australian standard materials (tested in the field for over 25 years)
- Manufactured in computerised ovens (not open flame)
- Thicker walls at base (supports pressure)
- Poly fused & welded fittings (stops fitting split)

FREE INCLUSIONS¹

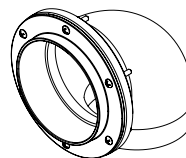
300mm Strainer & Light Guard



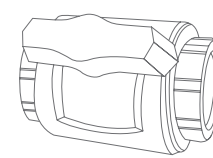
Poly Fused & Welded Fitting²



90mm Overflow



Ball Valve³



¹ Additional fittings are available on request

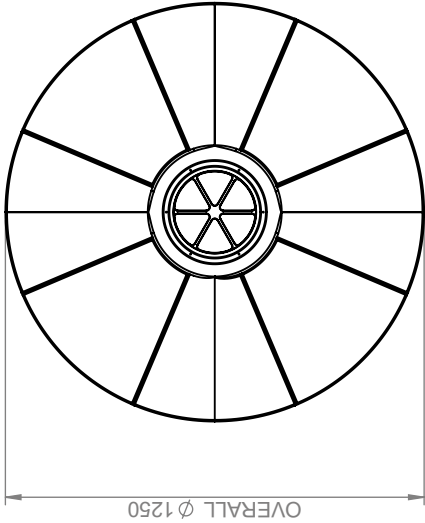
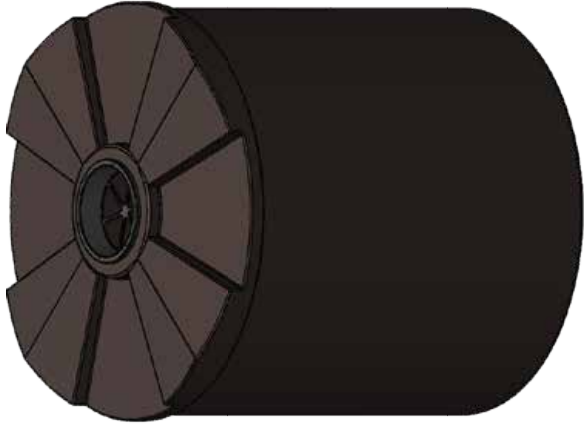
² Poly Fused & Welded Fitting sizes are available in 1", 1.5" and 2"

³ Ball Valve sizes are available in 1", 1.5" and 2"

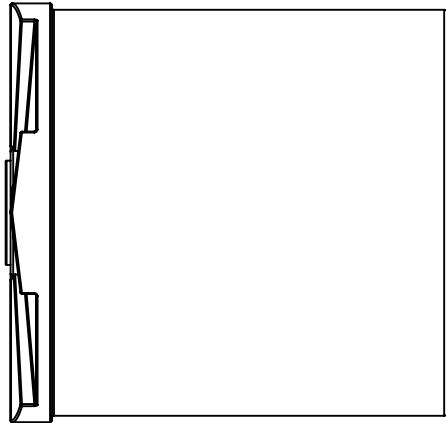
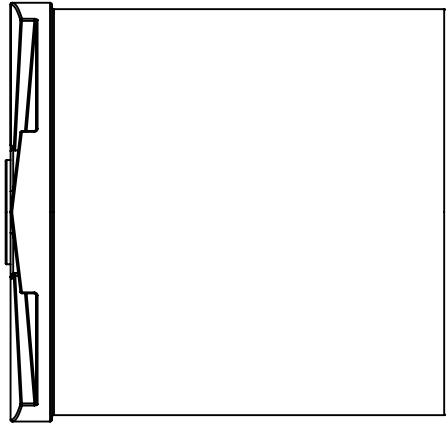
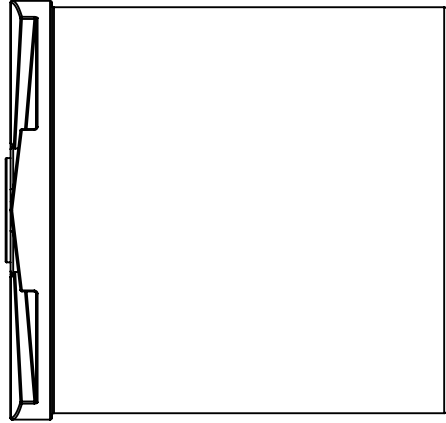
*Inclusions may change without notice, check with sales prior to ordering

COLOURS AVAILABLE

CB Surf Mist	Birch Grey (CB Dune)	CB Shale Grey	Armour Grey (CB Windspray)	CB Wallaby	CB Basalt	Slate Grey (CB Woodland Grey)
CB Monument	Black (CB Night Sky)	Mountain Blue (CB Deep Ocean)	Metal Grey (CB Ironstone)	CB Cove	Evening Haze	Merino Beige (CB Paperbark)
Gully	CB Jasper	Smooth Cream (CB Classic Cream)	Desert Haze (CB Sandbank)	Wheat	Earthtone (CB Bushland)	CB Mangrove
Mist Green (CB Pale Eucalypt)	Rivergum (CB Wilderness)	Heritage Green (CB Cottage Green)	Heritage Red (CB Manor Red)	<small>NB: COLORBOND® and colour names are registered trademarks of BlueScope Steel Limited*. Colour names, shown in brackets, are trademarks of BlueScope Steel Limited). Colours may vary due to screen and printer calibrations.</small>		



OVERALL Ø 1250



OVERALL HEIGHT / INLET 1310

Details

Manufacturer's Name	Nu-Tank Pty Ltd		
Tank Capacity	330 Gallon		
Maximum Specific Gravity	1.0		
Maximum Design Service Temperature	23°C		
Standard	AS/NZS 4766		



PRODUCT CODE:

PTRNWA330

DESCRIPTION:

330 GALLON / 1,500 LITRE WATER TANK